

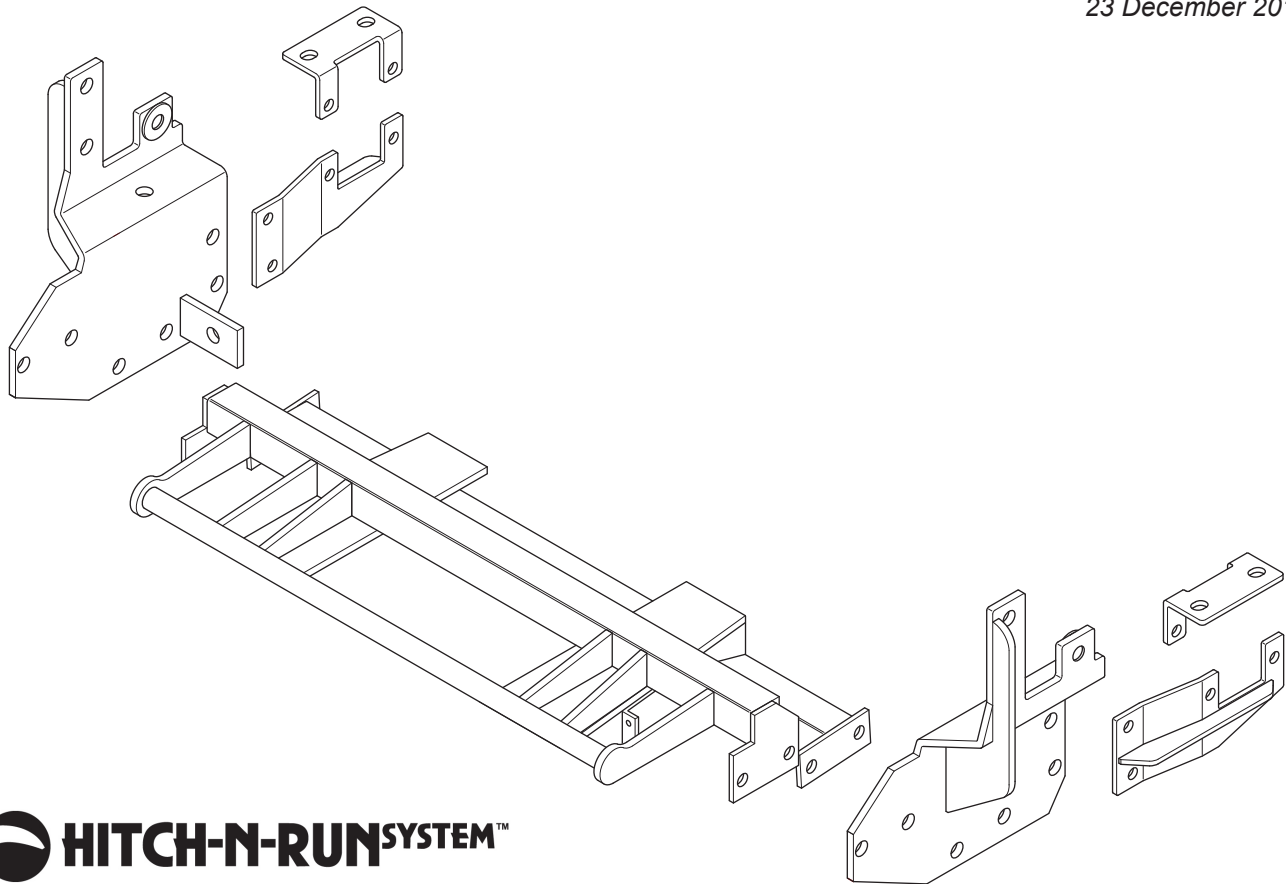


SNO-PRO[®] 3000

2006 - 2013 Dodge Ram 2500/3500 Gasoline
2006 - 2013 Dodge Ram 2500/3500 Diesel
(With Snow Prep. Package ONLY)
Will not Fit PowerWagon or Longhorn

Vehicle Mounting Kit: 1FK38A

23 December 2013



Curtis Industries LLC, 111 Higgins St., Worcester, MA 01606 TEL: (508) 853-2200 FAX: (508) 854-3377 For Parts and information visit us at www.CurtisCab.com

Curtis Industries LLC, reserves the right to change product design or specifications without notice or liability.

*Curtis Snow Plows are protected by the following U.S. Patent Numbers: 6,145,222 and 6,209,231 Licensed under U.S. Patent Number 5,568,694 & Canadian Patent Number 2,137,853.
Other patents pending.*

1FK38A Vehicle Mount Kit Parts List

Item #	Description	Qty.
1	Front Mount Frame	1
2	Driver's Side Push Arm	1
3	Passenger's Side Push Arm	1
4	Sway Bar Bracket	2
5	Passenger's Side Sway Bar Push Arm	1
6	Driver's Sway Bar Push Arm	1
7	1-1/2"-13 Strap Bolts	4
Hardware Bag Components Included In This Kit		
8	1/2"-13 x 1-1/2" Bolt, Gr.5, Plated	16
9	1/2" Lock Washer, High Strength, Plated	20
10	1/2"-13 Hex Nut, Plated	20
11	M10-1.5 x 40MM Bolt, Gr.10.9, Plated	4
12	M10 Flat Washer, Plated	4
13	M10 Lock Washer, High Strength, Plated	4
14	M12-1.75 x 110MM, Gr.10.9, Plated	4
15	M12 Flat Washer, Plated	4
16	M12 Lock Washer, High Strength, Plated	4
17	M12-1.75 Hex Nut, Plated	4
18	5/8"-11 x 2-1/2" Carriage Bolt, Gr.5, Plated	2
19	5/8" Lock Washer, High Strength, Plated	2
20	5/8"-11 Hex Jam Nut, Plated	4
Hardware Components Included In Plow Kit		
1a	Dual Plug Harness Bracket	1
-	10-32 x 3/4" Hex Head Screw, Plated	2
-	10-32 Nylock Lock Nut, Plated	2
-	8-32 x 1" Hex Head Screw, Plated	1
-	8-32 Nylock Lock Nut, Plated	1
-	#8 Nylon Flat Washer, 3/4" O.D.	1
-	#8 Flat Washer, SAE, Plated	1

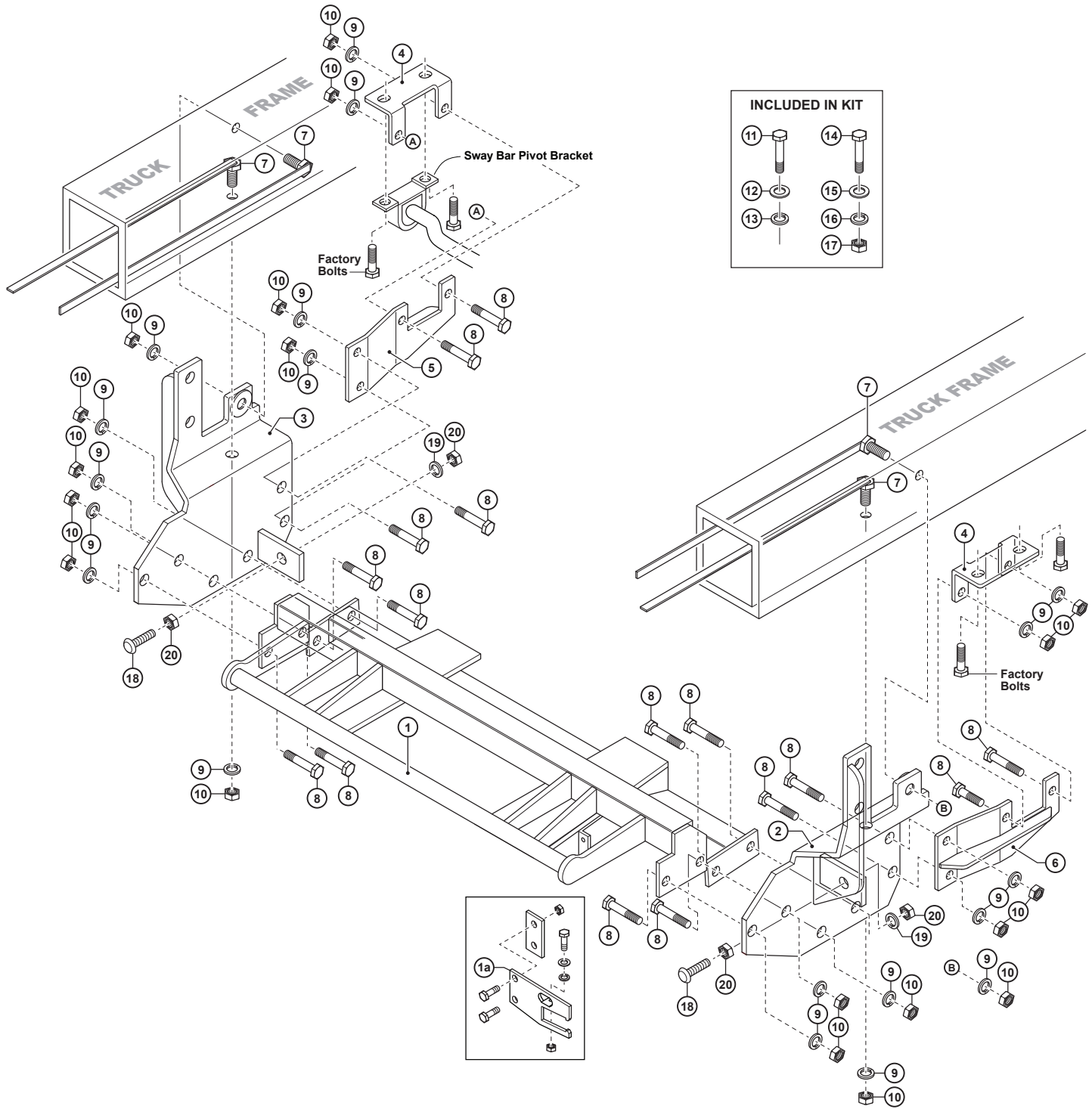


WARNING

It is highly recommended that front "helper springs", "airshocks", or other similar devices be installed onto this vehicle to prevent the front suspension from "bottoming out" while carrying a snow plow.

Vehicle must be properly "ballasted" by placing ballast weight behind the centerline of Rear Axle so that no more than 62% of the total weight of the Vehicle, Snow Plow, Driver, Ballast weight, (and any cargo) is placed on the Front Axle while at the same time not exceeding the Gross Vehicle Weight Rating and Front or Rear Gross Axle Weight Ratings.

1FK38A Mounting



Curtis Industries, LLC. reserves the right to change product design or specifications without notice or liability. Curtis Snow Plows and Truck equipment should only be used on vehicles equipped with the manufacturer's Snow Plow preparation package. Snow Plowing without the original snow plow preparation package may damage your vehicle and the added weight of the equipment may impair the operation and control of the vehicle.

1FK38A: 2006 - 2013 Dodge Ram 2500/3500 4WD

Mounting Kit Installation Instructions

1. VEHICLE PREPARATION

- (1a.) Remove and store vehicle (front) tow hooks. Threaded tow hook bolting bars will remain in position inside Frame Rails. Retain all of the Tow Hook mounting bolts. Tow Hooks will not be reinstalled with Mounting Frame (1) mounted in position. Original equipment Tow Hook bolts and Bolting bars will be reused to install Mounting Frame (1).
- (1b.) Remove Compatibility Brackets from the Frame, if so equipped. Save Brackets and Hardware.

2. MOUNTING FRAME

- (2a.) Remove Nuts from Bumper Fastener Assembly on both sides of the vehicle. For both Driver's Side Push Arm (2) and Passenger's Side Push Arm (3), align the forward mount holes with the Bumper Bolts. Loosely fasten by reinstalling original nuts.
- (2b.) Hold the Push Arms up to bottom of Frame Rails.
- (2c.) Lower Stabilizer Bar by removing the two Cap Screws located on the bottom of the Frame Rail on each side of the Vehicle. Position a Passenger's Side Sway Bar Bracket (5) and the Driver's Side Sway Bar Bracket (6) between the bottom of the Frame Rail and the Sway Bar Bracket for both sides. The Tabs on the Brackets should be facing inward.
- (2d.) Bolt the Sway Bar Brackets to the Sway Bar Push Arms loosely using 1/2"-13 x 1-1/2" Bolts (8), 1/2" Lock Washers (9) and Hex Nuts (10). Bolt the Sway Bar Push Arms to the Driver's and Passenger's Side Push Arms loosely using 1/2"-13 x 1-1/2" Bolts (8), 1/2" Lock Washers (9) and Hex Nuts (10). Repeat on opposite side.



NOTE

M10 and M12 Hardware has been supplied with this Kit to replace the Factory Bolts if the Factory Bolts cannot be used.



NOTE

All fasteners should remain loose or "finger tight" until all components have been attached to Vehicle or installation instructions specify tightening.

- (2e.) Using holes in Push Arms as guides, drill two 1/2" mounting holes (2 per side). One hole through the outer flange (side) of Frame Rail, and one hole through the bottom of the Frame Rail.
- (2f.) Insert a 1/2"-13 Strap Bolt (5) through the front of the Frame Rail. Fasten loosely using 1/2" Lock Washer (9) and 1/2" Hex Nut (10). Repeat same steps on opposite side of Mounting Frame.

ON VEHICLES WITHOUT COMPATIBILITY BRACKET

- (2e.) Clamp the Rear of each Push Arm tightly against the bottom of the Truck Frame. Using the Bottom Rear Mount Hole as a guide, drill a 1/2" diameter hole through the bottom of the Frame Rail. Insert a 1-1/2"-13 Strap Bolt (7) through the 1/2" drilled hole in the bottom of the Frame. Loosely fasten with a 1/2" Lock Washer (9) and Nut (10).
- (2f.) Using the 1/2" diameter mount holes as guides, drill a 1/2" diameter hole through the outer wall of each Frame Rail. Loosely fasten with a 1/2" Lock Washer (9) and Nut (10).

3. TIGHTENING

With Mounting Frame in final mounting position, fully tighten all fasteners. Cut off excess metal from Strap Bolts.

4. FINAL ADJUSTMENT AND INSPECTION

- (4a.) Retain removed Tow Hooks with vehicle for reinstallation if Mounting Frame is removed from vehicle.
- (4b.) Inspect all Mounting Frame Attachment Bolts to be certain that all bolts are in position and fully tightened.

5. OPTIONAL PLUG MOUNT BRACKET INSTALL



NOTE

Install the Plug Mount Bracket if the harness will be mounted on the frame kit, otherwise, the harness may be routed through the grill, bumper, etc.

Using (2) 10-32 x 3/4" hex bolts and nylon locknuts, fasten the Plug Mount Bracket to the Plug Mount Bracket Mounting Tab located on the drivers side of the frame kit receiver. The included 8-32 hardware is used for mounting the hi-amp battery leads to the Plug Mount Bracket, if used.

