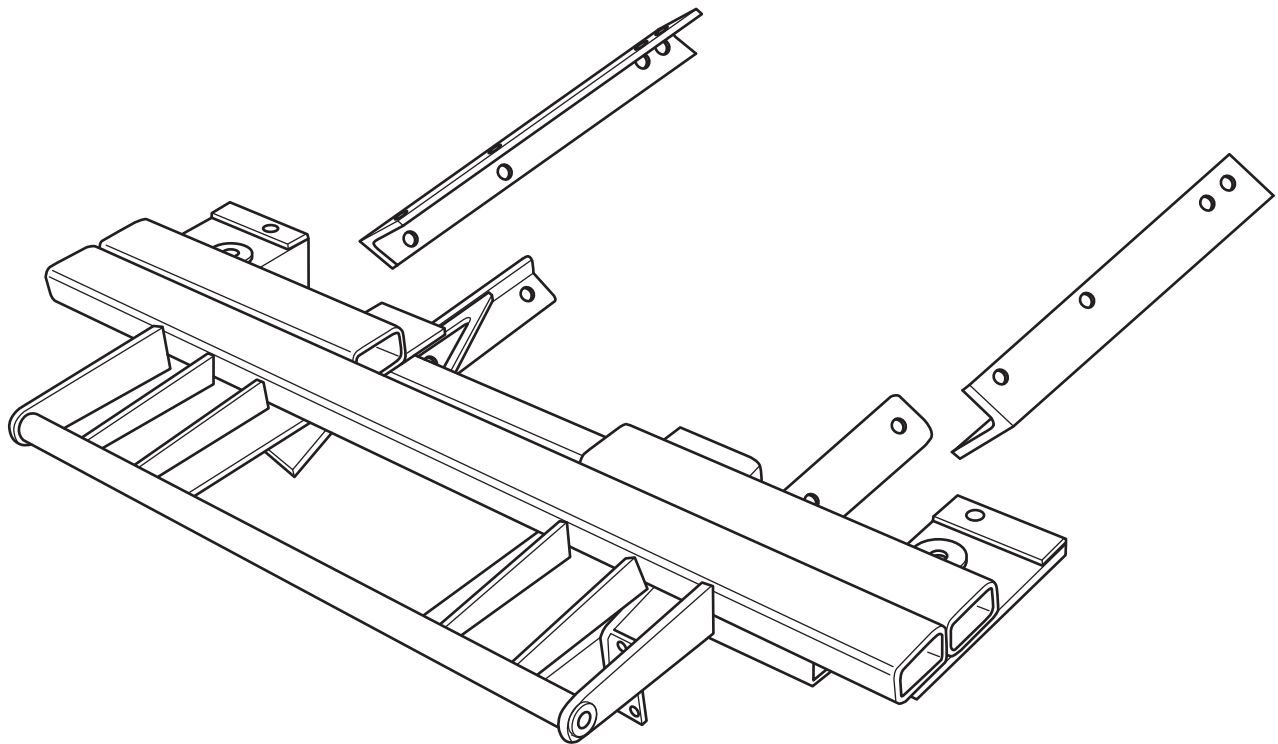




HOME-PRO[®] 3000

**2007 - 2012 Toyota Tundra Double Cab V8
Auto Transmission (With Max. GVWR & Max. FGAWR ONLY)**

Vehicle Mounting Kit: 1FK44A



Revised 16 May 2012

Curtis Industries Inc. LLC, 111 Higgins St., Worcester, MA 01606 TEL: (800) 343-7676 FAX: (508) 854-3377 For Parts and information visit us at www.Curtisindustries.net
Curtis Industries Inc. LLC, reserves the right to change product design or specifications without notice or liability.
Curtis Snow Plows are protected by the following U.S. Patent Numbers: 6,145,222 and 6,209,231 Licensed under U.S. Patent Number 5,568,694 & Canadian Patent Number 2,137,853.
Other patents pending.

1FK44A Vehicle Mount Kit Parts List

Item #	Description	Qty.
1	Mounting Frame	1
2	Rear Push Angle Connector PN: AI-FK44RPAC	2
Hardware Bag Components Included In This Kit		
3	1/2"-13 Nuts	12
4	1/2" - Lock Washers, High Strength	12
5	12mm Lock Washers	4
6	12mm x 1.25 x 50mm Bolts	4
7	1/2"-13 x 1-1/2" Bolts	12
8	12mm Flat Washers	4
Hardware Components Included In Plow Kit		
1a	Dual Plug Harness Bracket	1
-	10-32 x 3/4" Hex Head Screw, Plated	2
-	10-32 Nylock Lock Nut, Plated	2
-	8-32 x 1" Hex Head Screw, Plated	1
-	8-32 Nylock Lock Nut, Plated	1
-	#8 Nylon Flat Washer, 3/4" O.D.	1
-	#8 Flat Washer, SAE, Plated	1

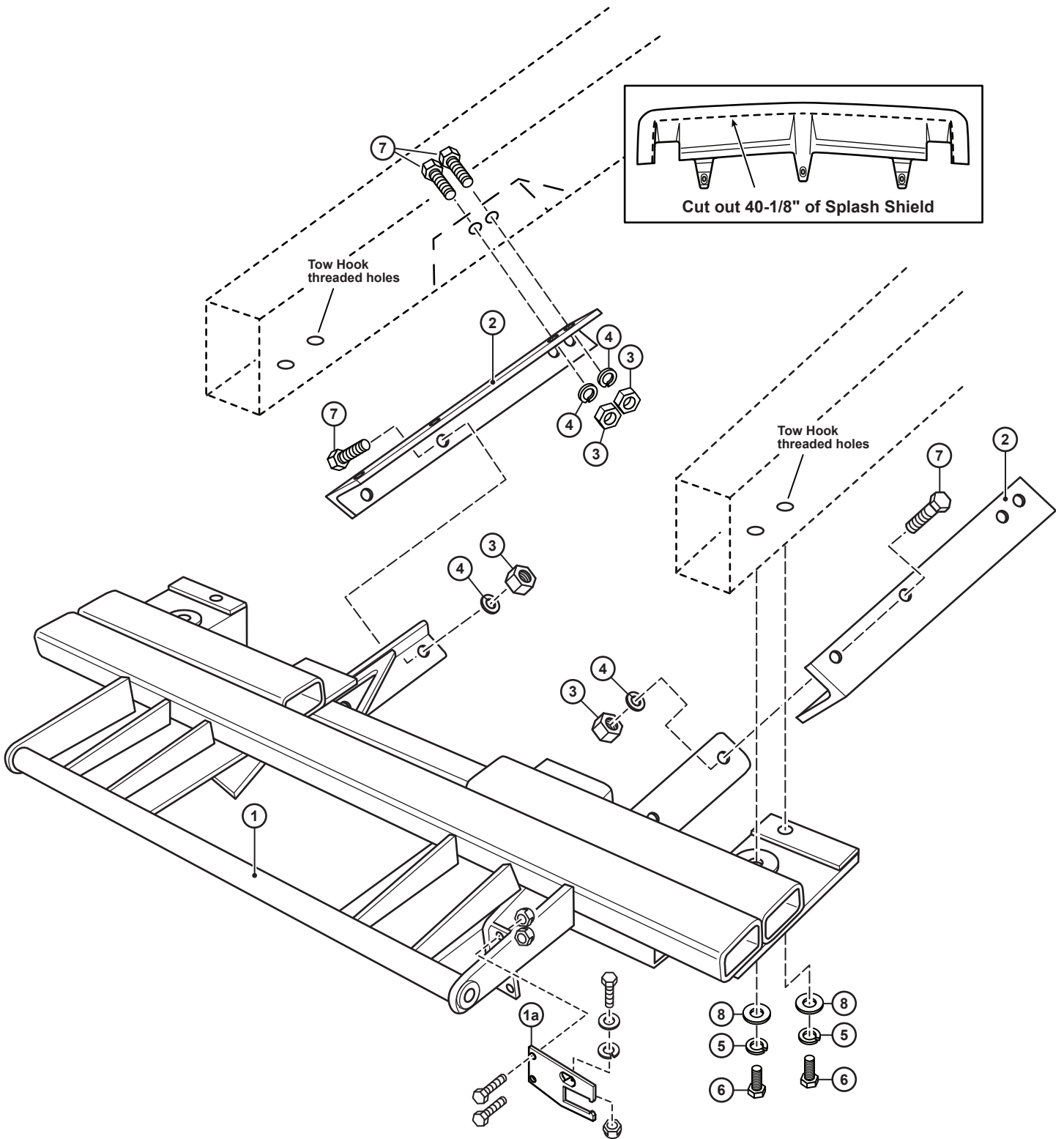


WARNING

It is highly recommended that front "helper springs", "airshocks", or other similar devices be installed onto this vehicle to prevent the front suspension from "bottoming out" while carrying a snow plow.

Vehicle must be properly "ballasted" by placing ballast weight behind the centerline of Rear Axle so that no more than 62% of the total weight of the Vehicle, Snow Plow, Driver, Ballast weight, (and any cargo) is placed on the Front Axle while at the same time not exceeding the Gross Vehicle Weight Rating and Front or Rear Gross Axle Weight Ratings.

1FK44A Mounting



Curtis Industries, LLC. reserves the right to change product design or specifications without notice or liability. Curtis Snow Plows and Truck equipment should only be used on vehicles equipped with the manufacturer's Snow Plow preparation package. Snow Plowing without the original snow plow preparation package may damage your vehicle and the added weight of the equipment may impair the operation and control of the vehicle.

1FK44A: 2007 - 2012 Toyota Tundra Double Cab V8

Figure 1. Tundra Firewall Electrical Harness Drilling Location

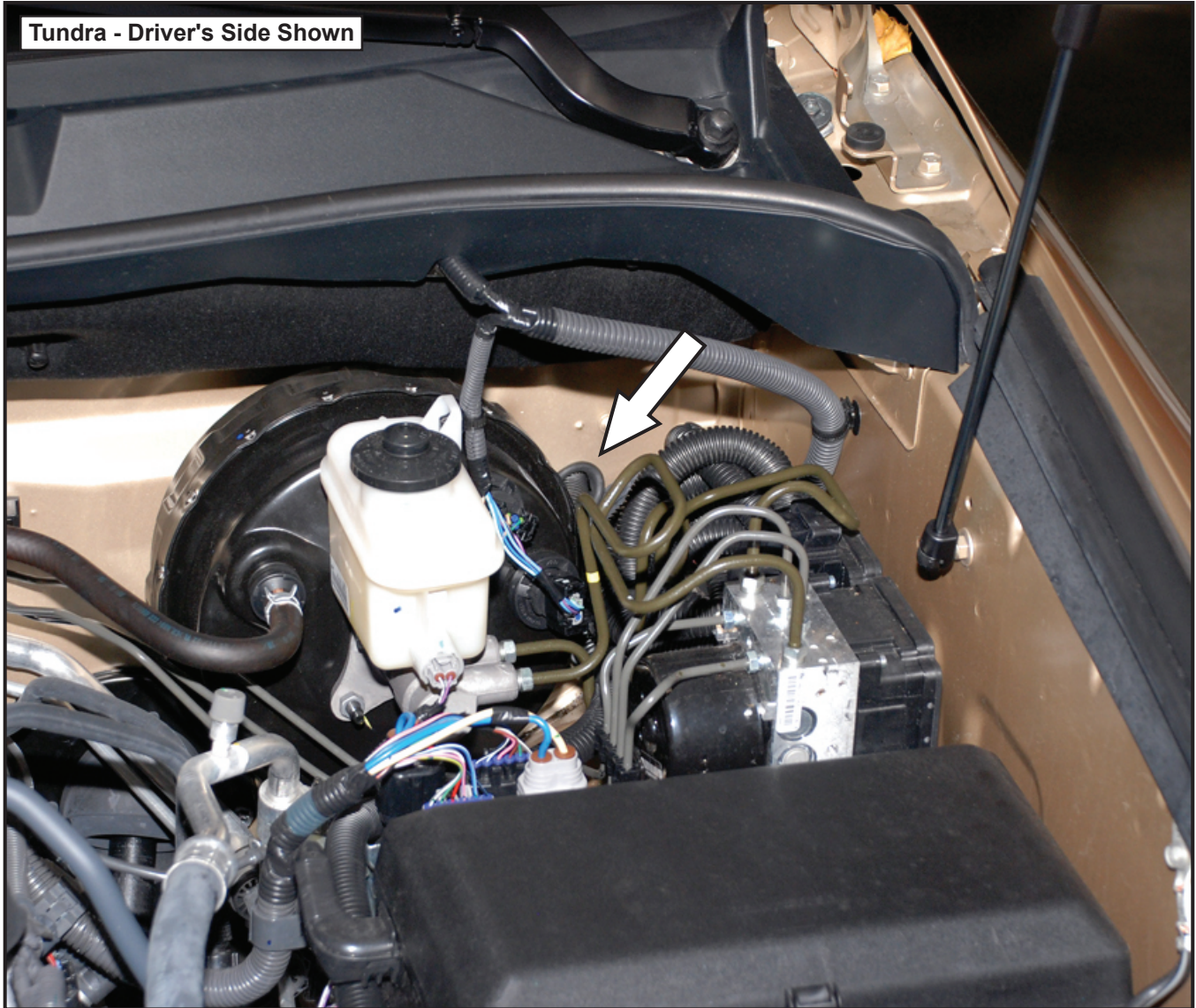
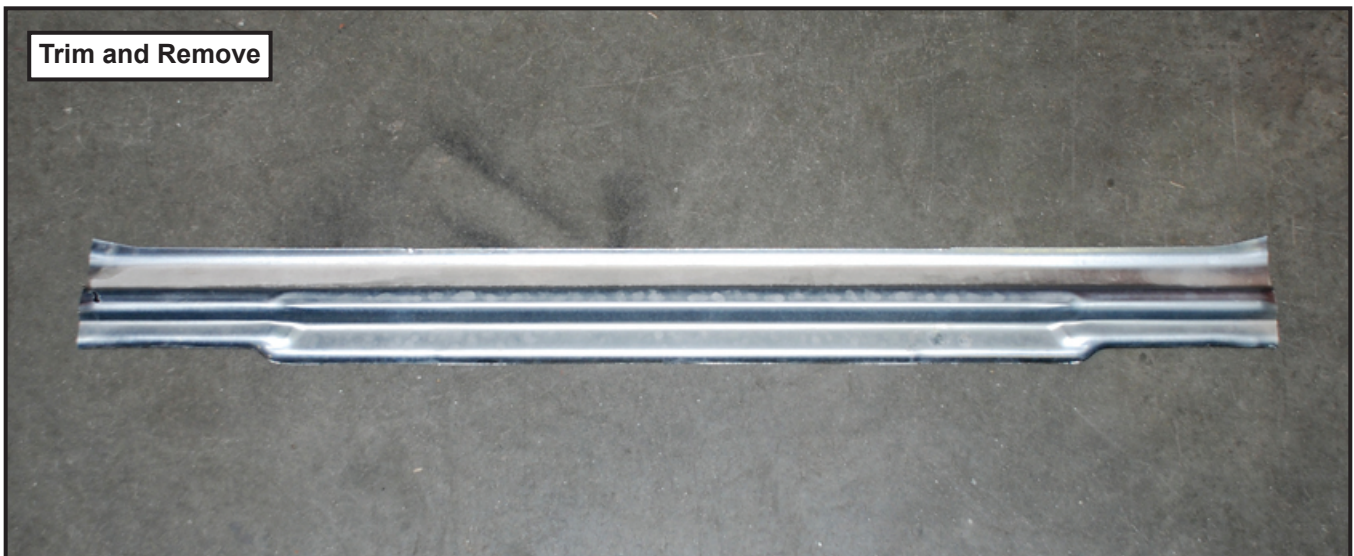


Figure 2. Tundra Lower Valance Support



1FK44A: 2007 - 2012 Toyota Tundra Double Cab V8

Mounting Kit Installation Instructions

1. VEHICLE PREPARATION

- (1a.) Remove and store the original equipment front skid / splash pan, the tie down bracket & fasteners on the driver's side frame rail and the tow hook / tie down bracket & fasteners on the passenger's side frame rail just behind the front bumper.
Save all the original equipment parts and fasteners for possible reinstallation if the plow mounting is removed.
The skid / splash pan, tie down brackets, tow hook, and fasteners will not be re-installed with the mounting frame (1) attached.
- (1b.) Remove the center section of the vehicle front bumper and cut approximately 40" wide and 8" up from the bottom of the bumper.
- (1c.) Trim away the steel Lower Valance Support. Cut the metal flush on both sides with the bumper cutout made in step 1b. Deburr the rough edges. This removed piece is shown in Figure 2. and will be discarded.



NOTE

All fasteners should remain loose or "finger tight" until all components have been attached to Vehicle or installation instructions specify tightening.

IMPORTANT

If the plow mounting frame (1) is ever removed from the vehicle, the original equipment skid / splash pan must be reinstalled before the vehicle is put back into service.

2. MOUNTING FRAME

- (2a.) Lift the mounting frame (1) up under the frame rails lining up the two holes on the horizontal plate with the tow hook mounting holes.
Fasten using the four 12mm x 1.25 x 50mm Bolts (6), 12mm Lock Washers (5), and 12mm Flat Washers (8).
- (2b.) Install Left and Right Rear Push Angle Connectors (2) using four 1/2-13 x 1-1/2" Bolts (7), 1/2" Lock Washers (4) and 1/2-13 Nuts (3) at the rear of the Rear Push Angles.
Fasten using the four 1/2"-13 x 1.5" Bolts (7) and 1/2" Lock Washers (4) and the 1/2"-13 Nuts (3) provided in the hardware kit.
- (2c.) Using the two 9/16" diameter rear holes in the Rear Push Angle Connector as a guide, drill out the 3/8" diameter holes in the vehicle's A-Frame Bracket to 9/16" to accept 1/2" bolts. Install two 1/2-13 x 1.5" long bolts, two washers, and two nuts. Repeat for opposite side.

3. FINAL ADJUSTMENT AND INSPECTION

Inspect the mounting attachment and original equipment bolts to be certain that they are all in place and that they are all tight.

4. OPTIONAL PLUG MOUNT BRACKET INSTALL



NOTE

Install the Plug Mount Bracket if the harness will be mounted on the frame kit, otherwise, the harness may be routed through the grill, bumper, etc.

Using (2) 10-32 x 3/4" hex bolts and nylon locknuts, fasten the Plug Mount Bracket to the Plug Mount Bracket Mounting Tab located on the drivers side of the frame kit receiver.
The included 8-32 hardware is used for mounting the hi-amp battery leads to the Plug Mount Bracket, if used.

