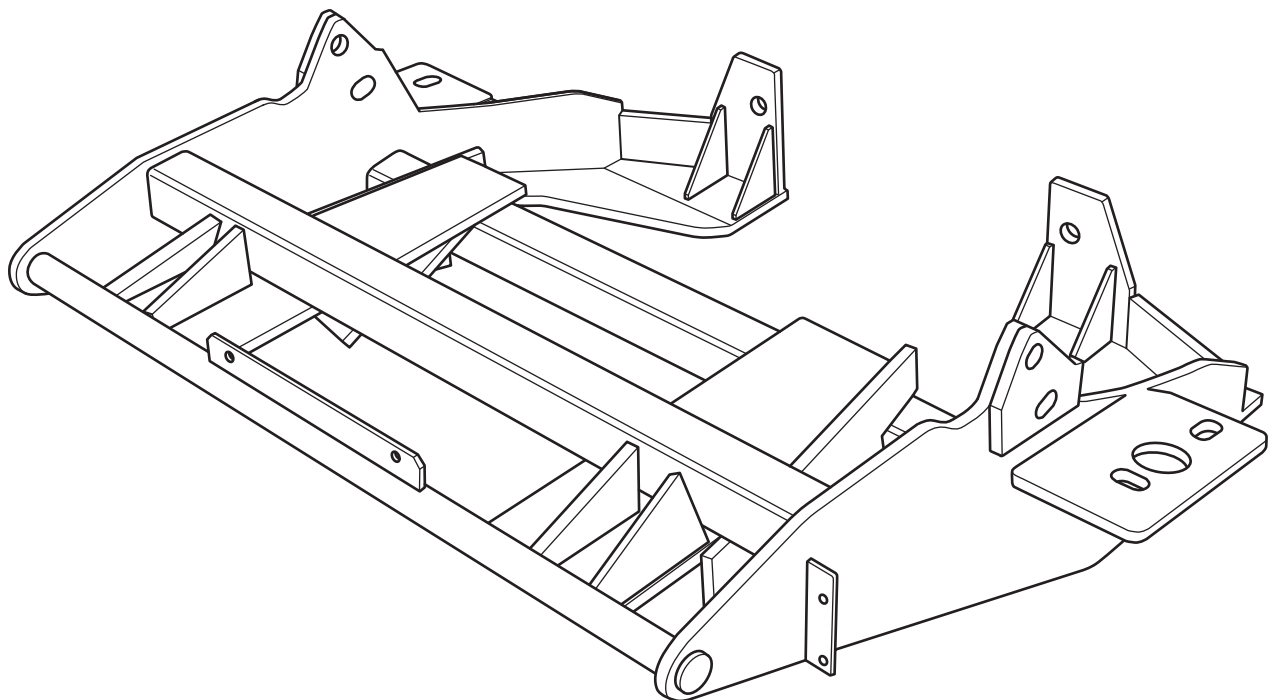




# **SNO-PRO<sup>®</sup> 3000**

**2015 - GM Silverado / Sierra 2500, 3500  
New Style (With Snow Plow Prep. ONLY)**

**Vehicle Mounting Kit: 1FK49**



25 August 2014

Curtis Industries LLC, 111 Higgins St., Worcester, MA 01606 TEL: (508) 853-2200 FAX: (508) 854-3377 For Parts and information visit us at [www.CurtisCab.com](http://www.CurtisCab.com)  
Curtis Industries LLC, reserves the right to change product design or specifications without notice or liability.  
Curtis Snow Plows are protected by the following U.S. Patent Numbers: 6,145,222 and 6,209,231 Licensed under U.S. Patent Number 5,568,694 & Canadian Patent Number 2,137,853.  
Other patents pending.

## 1FK49 Vehicle Mount Kit Parts List

Item #	Description	Qty.
1	Mounting Frame	1
2	1/2"-13 x 1-1/2" Strap Bolt	2
3	Cross Member Spacer	2
4	Spacer Bar (Use only as needed with certain vehicle applications)	2
<b>Hardware Bag Components Included In This Kit</b>		
5	M12 x 1.75 x 140mm Bolt, Gr.10.9, Plated	2
6	M12 x 1.75 x 55mm Bolt, Gr.10.9, Plated	2
7	12mm Flat Washer, Plated	6
8	12mm Lock Washer, High Strength, Plated	4
9	12mm-1.75 Hex Nut, Plated	2
10	1/2" Flat Washer, Plated	2
11	1/2" Lock Washer, High Strength, Plated	4
12	1/2"-13 Hex Nut, Plated	4
13	5/8" x 5-1/2" Bolt, Gr. 5, Plated	2
14	5/8" Flat Washer, Plated	8
15	5/8" Lock Washer, High Strength, Plated	4
16	5/8" Hex Nut, Plated	4
17	1/4"-20 x 3/4" Bolt, Gr.5, Plated	2
18	1/4" Flat Washer, Plated	2
19	1/4" Lock Washer, High Strength, Plated	2
20	1/4"-20 Hex Nut, Plated	2
21	5/8"-13 x 2-1/4" Bolt	2
<b>Hardware Components Included In Plow Kit</b>		
1a	Dual Plug Harness Bracket	1
-	10-32 x 3/4" Hex Head Screw, Plated	2
-	10-32 Nylock Lock Nut, Plated	2
-	8-32 x 1" Hex Head Screw, Plated	1
-	8-32 Nylock Lock Nut, Plated	1
-	#8 Nylon Flat Washer, 3/4" O.D.	1
-	#8 Flat Washer, SAE, Plated	1

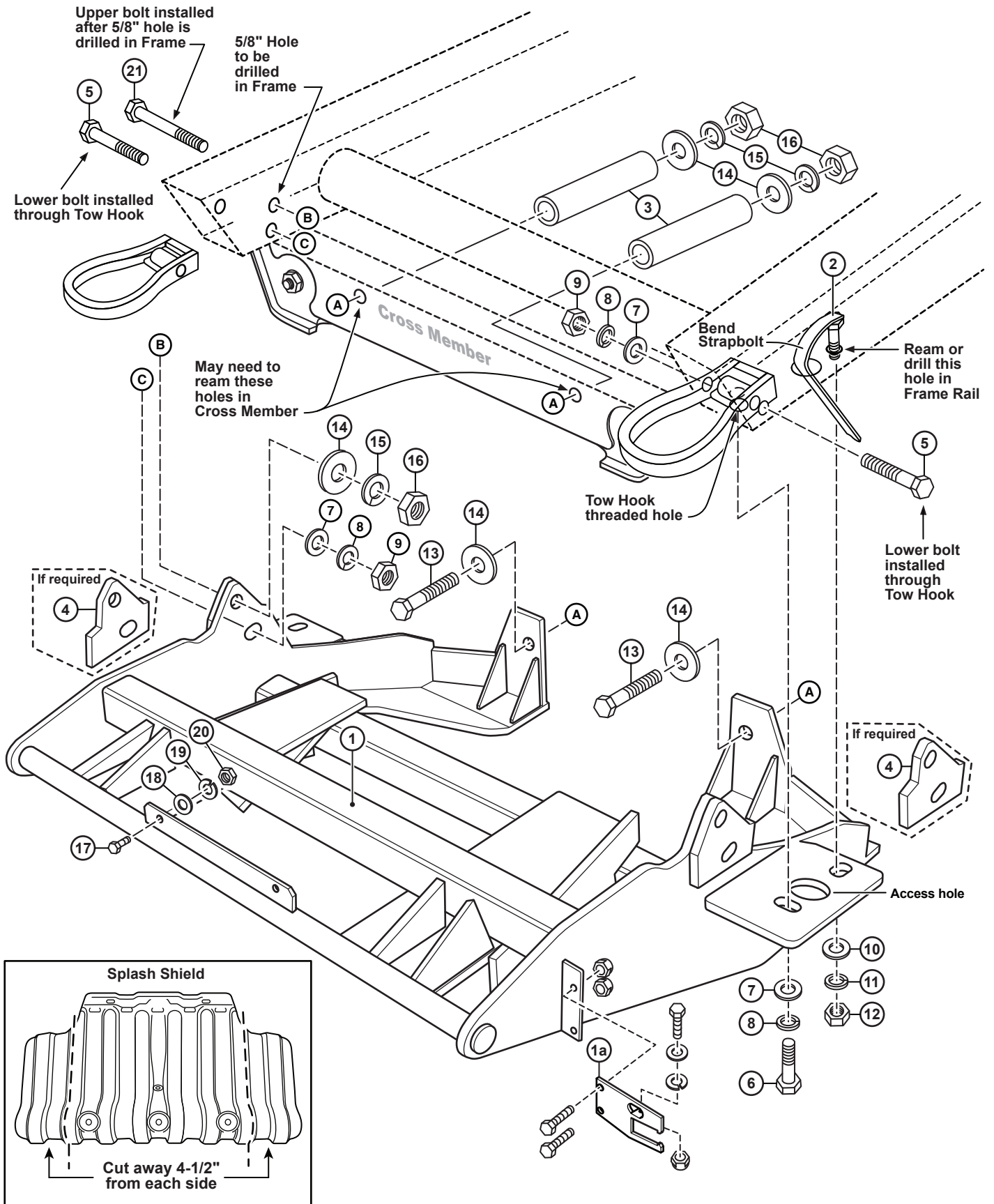


### WARNING

It is highly recommended that front "helper springs", "airshocks", or other similar devices be installed onto this vehicle to prevent the front suspension from "bottoming out" while carrying a snow plow.

Vehicle must be properly "ballasted" by placing ballast weight behind the centerline of Rear Axle so that no more than 62% of the total weight of the Vehicle, Snow Plow, Driver, Ballast weight, (and any cargo) is placed on the Front Axle while at the same timenot exceeding the Gross Vehicle Weight Rating and Front or Rear Gross Axle Weight Ratings.

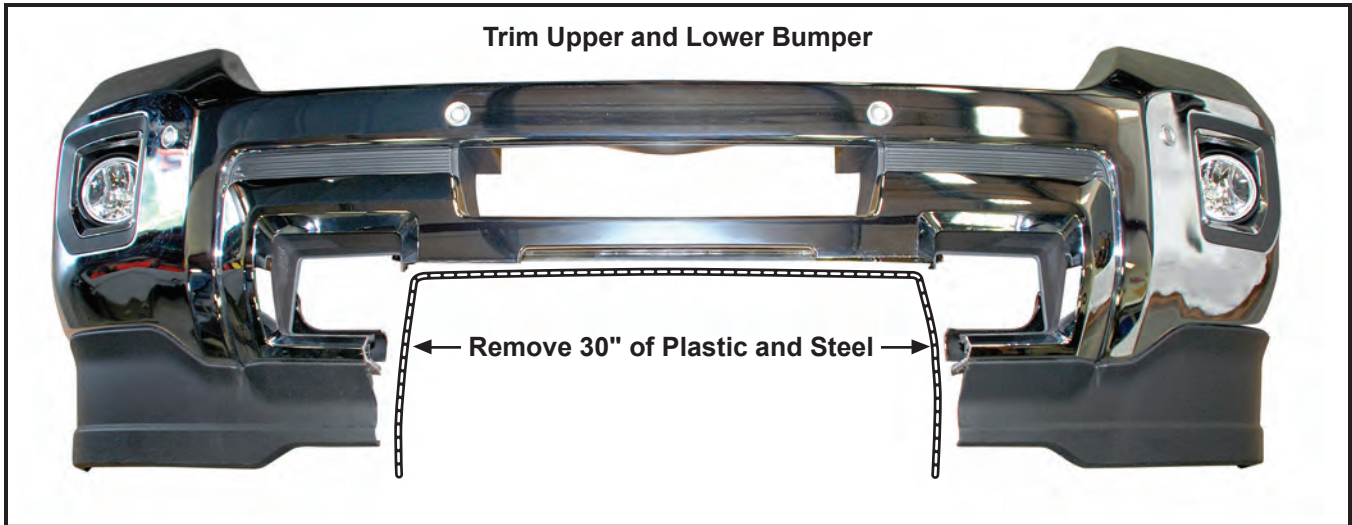
# 1FK49 Mounting



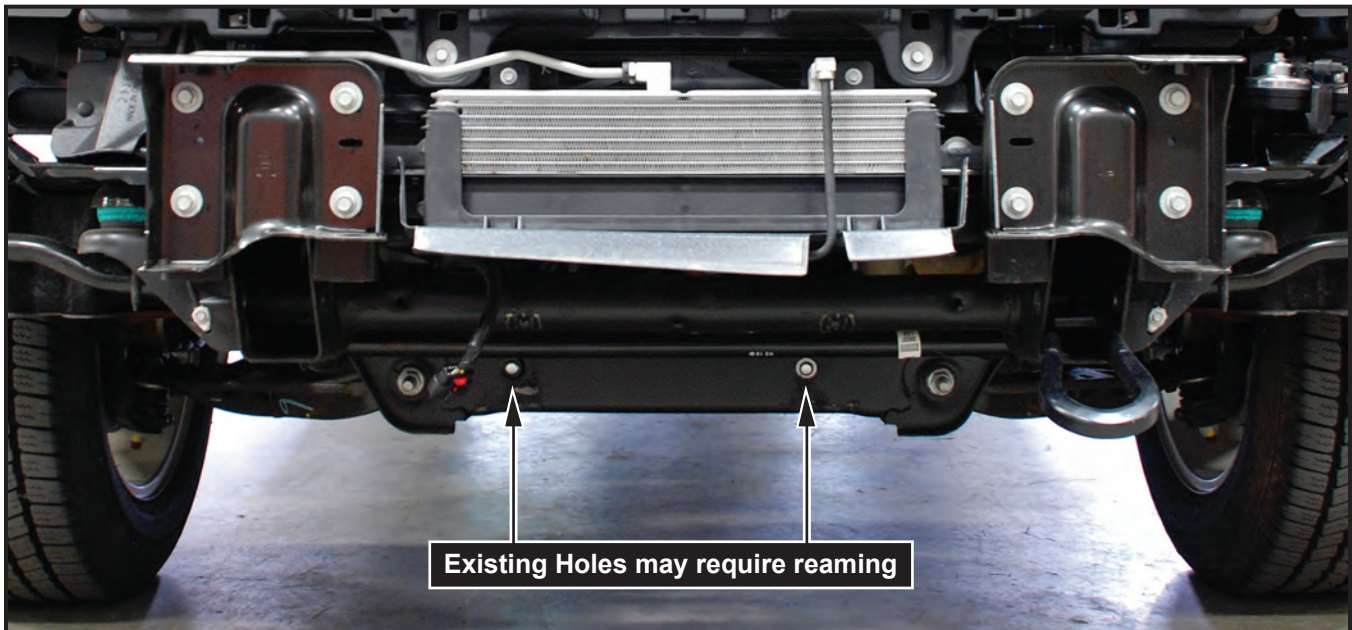
Curtis Industries, LLC. reserves the right to change product design or specifications without notice or liability. Curtis Snow Plows and Truck equipment should only be used on vehicles equipped with the manufacturer's Snow Plow preparation package. Snow Plowing without the original snow plow preparation package may damage your vehicle and the added weight of the equipment may impair the operation and control of the vehicle.

**1FK49: 2015 - GM Silverado / Sierra 2500, 3500 New Style**

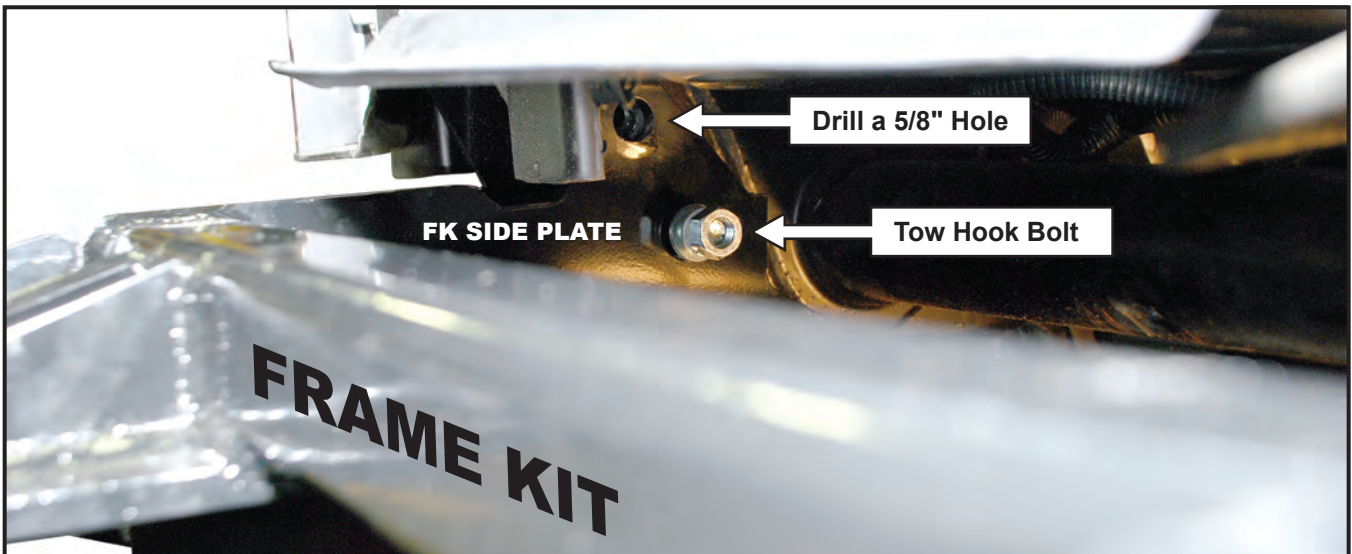
**Figure 1. Upper and Lower Bumper Trim**



**Figure 2. Frame Kit Mounting**



**Figure 3. Frame Kit Mounting**





## **Mounting Kit Installation Instructions**

### **1. VEHICLE PREPARATION**

- (1a.) Remove the engine compartment cover by removing the 12 outer fasteners.
- (1b.) Remove the grille fasteners and pull out the grill.
- (1c.) Remove the bumper fasteners and remove the bumper.
- (1d.) Trim upper and lower bumper material (refer to Figure 1).



**NOTE** Retain all removed fasteners for reinstallation.



**NOTE** All fasteners should remain loose or "finger tight" until all components have been attached to Vehicle or installation instructions specify tightening.

### **2. MOUNTING FRAME**

- (2a.) Remove tow hook bolts and splash shield.
- (2b.) Ream cross member to fit the cross member spacers (refer to Figure 2).
- (2c.) Lift the mounting frame (1) up under the front of the vehicle between the frame rails with the upper front mounting holes in the side plates lined up with the tow hook mounting holes. Insert 5/8" x 5-1/2" bolt (13) with 5/8" flat washer (14) into the cross member spacer (3), through the cross member and rear mount holes. Secure with a 5/8" flat washer (13), 5/8" lock washer (15), and 5/8" Nut (16).
- (2d.) Insert the tow hooks back into the frame rails and fasten using a M12 x1.75 x 55mm bolt (6), 12mm lock washer (8) and 12mm flat washer (7) up through the front slotted hole in each horizontal bolting plate of the mounting frame (1), the bottom surface of each frame rail, and thread into the tow hooks.
- (2e.) Fasten the lower front hole of the side plates of the mounting frame (1) to the inner surface of the frame rails, through the horizontal hole in the tow hooks and frame rail outer surfaces using M12 x 1.75 x 140mm. bolts (5), 12mm flat washers (7), 12mm lock washers (8), and M12 x 1.75 nuts (9). Spacer Bars (4) are provided in Hardware Kit if needed to attain a correct fit. Tighten all installed mounting frame tow hook fasteners at this time.
- (2f.) Use the upper hole on the mounting frame side plates as a guide, drill a 5/8" hole in the frame rails on each side. Insert a 5/8"-13 x 2-1/4" bolt (21) and secure with a 5/8" flat washer (14), a 5/8" lock washer (15), and a 5/8" hex nut (16) (refer to Figure 3).
- (2g.) Using the rear slotted holes in each horizontal bolting plate of the mounting frame (1) as guides, ream or drill out the holes in the bottom surface of the frame rails to 9/16" diameter. Insert 1/2"-13 x 1-1/2" strap bolts (2) up through the large diameter holes in the horizontal bolting plates and frame rail and back down through the reamed holes. (straps on the strap bolts (2) can easily be bent and shaped to fit). Fasten and tighten the strap bolts (2) using 1/2" flat washers (10), 1/2" lock washers (11) and 1/2"-13 nuts (12). Trim the strap bolt straps even with the frame rails.
- (2h.) Install all wiring, route and secure as needed. Reinstall bumper, grill, and engine cover reusing original hardware removed earlier during vehicle preparation.

### **3. FINAL ADJUSTMENT AND INSPECTION**

- (3a.) Reinstall the trimmed plastic splash shield back in its original position using the original equipment fasteners. The front license plate can be mounted to the bracket on the round bar of the mounting frame using 1/4"-20 x 3/4" bolts (17), 1/4" flat washers (18), 1/4" lock washers (19), and 1/4"-20 nuts (20).
- (3b.) Inspect the mounting attachment and original equipment bolts to be certain that they are all in place and that they are all tight.

### **4. OPTIONAL PLUG MOUNT BRACKET INSTALL**



**NOTE** Install the Plug Mount Bracket if the harness will be mounted on the frame kit, otherwise, the harness may be routed through the grill, bumper, etc.

Using (2) 10-32 x 3/4" hex bolts and nylon locknuts, fasten the Plug Mount Bracket to the Plug Mount Bracket Mounting Tab located on the drivers side of the frame kit receiver. The included 8-32 hardware is used for mounting the hi-amp battery leads to the Plug Mount Bracket, if used.

