

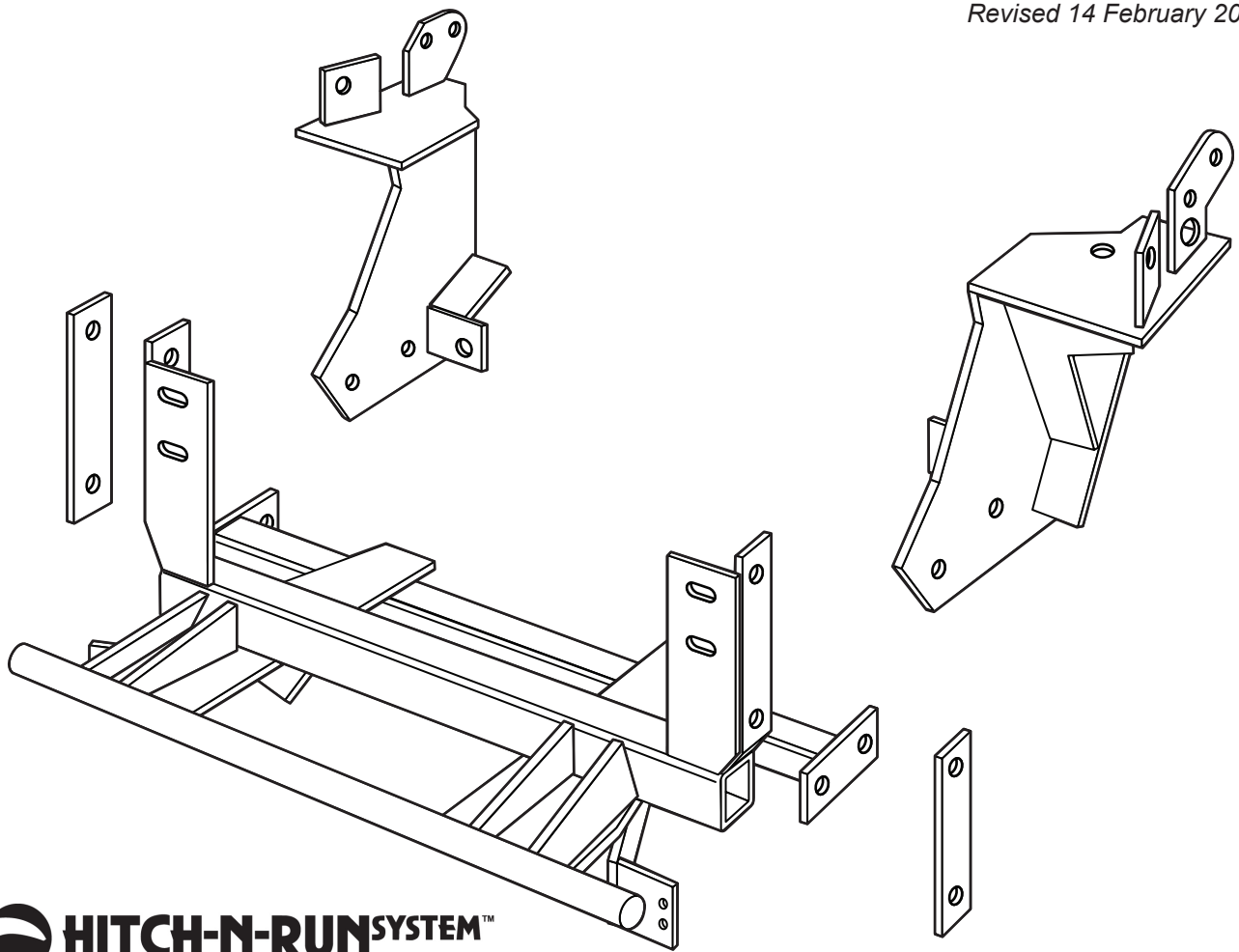


# SNO-PRO<sup>®</sup> 3000

**1992 - 1997 Ford F-250, F-350  
(With Snow Plow Prep. Package ONLY)**

## Vehicle Mounting Kit: 1FK7

*Revised 14 February 2011*



Curtis Industries Inc. LLC, 111 Higgins St., Worcester, MA 01606 TEL: (800) 343-7676 FAX: (508) 854-3377 For Parts and information visit us at [www.Curtisindustries.net](http://www.Curtisindustries.net)  
Curtis Industries Inc. LLC, reserves the right to change product design or specifications without notice or liability.  
Curtis Snow Plows are protected by the following U.S. Patent Numbers: 6,145,222 and 6,209,231 Licensed under U.S. Patent Number 5,568,694 & Canadian Patent Number 2,137,853.  
Other patents pending.

## 1FK7 Vehicle Mount Kit Parts List

Item #	Description	Qty.
1	Clamp Bar	2
2	Mounting Frame	1
3	Driver's Side Push Arm	1
4	Passenger's Side Push Arm	1
9	5/8"-11 x 1-1/2" Strap Bolt	4
<b>Hardware Bag Components Included In This Kit</b>		
5	1/2"-13 x 1-1/2" Bolt, Gr. 5, Cad., Plated	4
6	1/2" Lockwasher	8
7	1/2"-13 Hex Nut	8
8	5/8"-11 x 1-1/2" Bolt, Gr. 5, Cad., Plated	2
10	1/2"-13 x 5-1/2" Bolt, Gr. 5, Cad., Plated	4
11	5/8"-11 x 2-1/2" Carriage Bolt, Gr. 5, Cad., Plated	2
12	5/8" Lockwasher, Cad., Plated	8
13	5/8"-11 Hex Jam Nut, Cad., Plated	4
14	5/8"-11 Hex Nut, Cad., Plated	6
15	5/8" Flat Washer, Cad., Plated	4
<b>Hardware Components Included In Plow Kit</b>		
2a	Dual Plug Harness Bracket	1
-	10-32 x 3/4" Hex Head Screw, Plated	2
-	10-32 Nylock Lock Nut, Plated	2
-	8-32 x 1" Hex Head Screw, Plated	1
-	8-32 Nylock Lock Nut, Plated	1
-	#8 Nylon Flat Washer, 3/4" O.D.	1
-	#8 Flat Washer, SAE, Plated	1

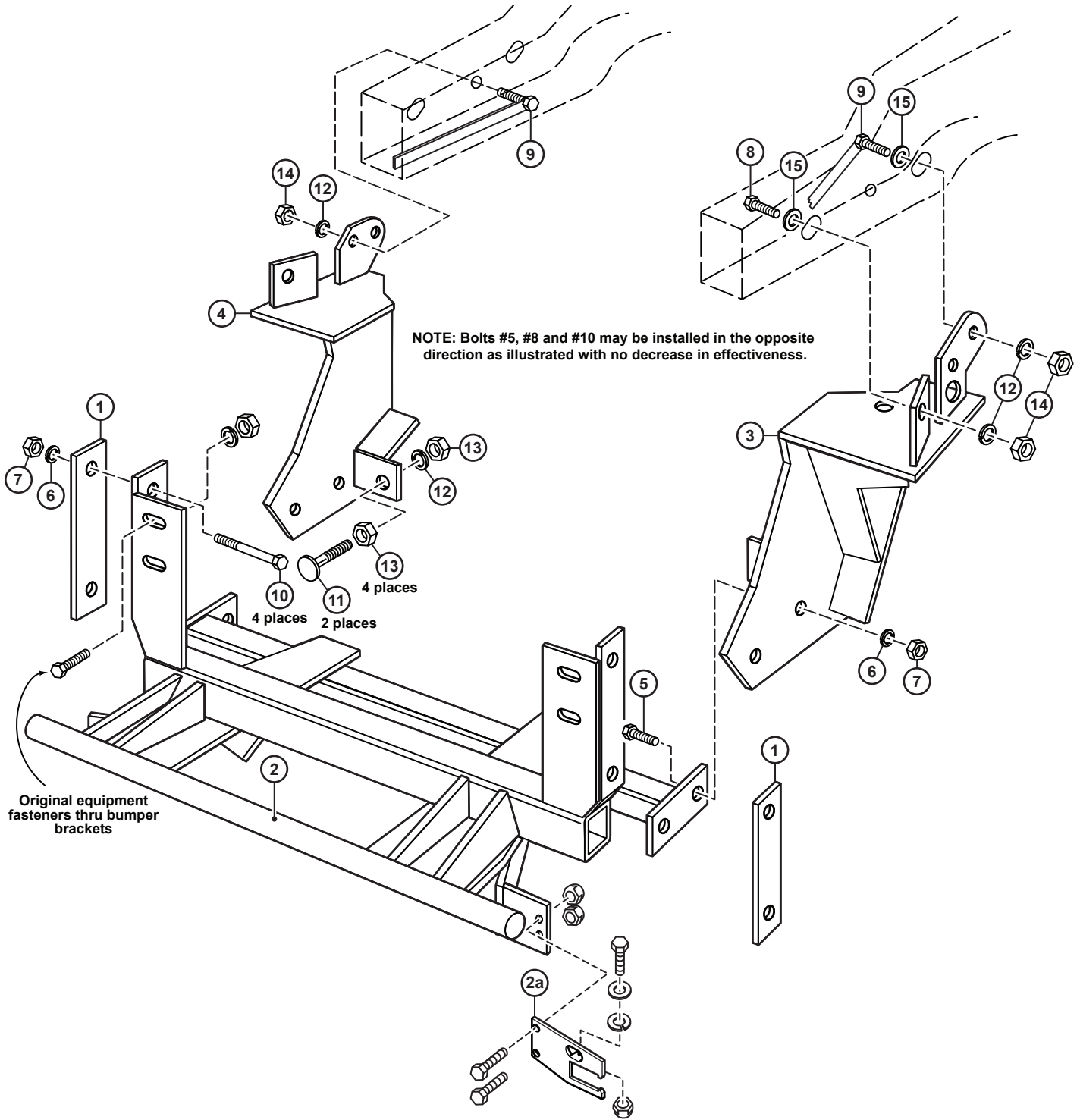


### WARNING

It is highly recommended that front "helper springs", "airshocks", or other similar devices be installed onto this vehicle to prevent the front suspension from "bottoming out" while carrying a snow plow.

Vehicle must be properly "ballasted" by placing ballast weight behind the centerline of Rear Axle so that no more than 62% of the total weight of the Vehicle, Snow Plow, Driver, Ballast weight, (and any cargo) is placed on the Front Axle while at the same time not exceeding the Gross Vehicle Weight Rating and Front or Rear Gross Axle Weight Ratings.

# 1FK7 Mounting



**Curtis Industries, LLC. reserves the right to change product design or specifications without notice or liability. Curtis Snow Plows and Truck equipment should only be used on vehicles equipped with the manufacturer's Snow Plow preparation package. Snow Plowing without the original snow plow preparation package may damage your vehicle and the added weight of the equipment may impair the operation and control of the vehicle.**

# 1FK7: 1992 - 1997 Ford F-250, F-350

## Mounting Kit Installation Instructions

### 1. VEHICLE PREPARATION

- (1a.) Temporarily remove the vehicle front bumper. Save all bumper fasteners for reuse.
- (1b.) Screw a 5/8"-11 hex jam nut (13) all the way onto each of the 5/8"-11 x 2-1/2" carriage bolts (11). Place each carriage bolt / jam nut assembly through the ears on the driver's side and passenger's side push arms (3) & (4) with the heads of the carriage bolts toward the front of the vehicle. Fasten loosely using a 5/8" lockwasher (12) and 5/8"-11 hex jam nut (13) on each carriage bolt / jam nut assembly.



**NOTE** All fasteners should remain loose or "finger tight" until all components have been attached to vehicle or installation instructions specify tightening.

- (1c.) Jack vehicle up from under the frame rails until front wheels clear the ground. Place jack stands under the frame rails to the rear of the front wheels to prevent unintended lowering of the vehicle.
- (1d.) From between the frame rails, place the upper end of the driver's side and passenger's side push arms (3) & (4) out through the space between the front springs and the lower flange of the frame rails. Remove the jack stands from under the frame rails and lower the vehicle to the ground.

### 2. MOUNTING FRAME

- (2a.) Lift the Mounting frame (2) up under the front of the vehicle with the front cross tube brackets behind the vehicle bumper brackets (welded to the frame rails). Place 1/2"-13 x 5 1/2" bolts (10) out through the holes in the outer bars of the cross tube brackets. (One 1/2"-13 x 5 1/2" bolt (10) should be over the top flange and one should be under the bottom flange of the frame rail on each side.) Install a clamp bar (1) on over the ends of the 1/2"-1 x 5-1/2" bolts (10) on the outside of each frame rail. Fasten using 1/2" lock washers (6) and 1/2"-13 hex nuts (7).
- (2b.) Reinstall the vehicle front bumper with the bumper bolts through the bumper brackets (welded to the frame rails) and through the slotted holes in the front cross tube brackets of the mounting frame (2). Fasten on the backside of the front cross tube brackets using the original equipment bumper nuts.

### 3. DRIVER'S SIDE PUSH ARM

- (3a.) Line up the front and rear holes in the upper section of the driver's side push arm (3) with the two slotted holes in the outer surface of the Driver's side frame rail. From inside the frame rail, install a 5/8"-11 x 1-1/2" bolt (8) and 5/8" flat washer (15) out through the front slotted hole and through the hole in the upper front section of the push arm.
- (3b.) From inside the frame rail, install a 5/8"-11 x 1-1/2" strap bolt (9) and 5/8" flat washer (15) out through the rear slotted hole and through the hole in the upper rear section of the push arm. Fasten using 5/8" lock washers (12) and 5/8" hex nuts (14).
- (3c.) Line up the two holes in the front end of the Driver's side push arm (3) with the holes in the end plate of the rear cross tube of the mounting frame (2). Fasten using 1/2"-13 x 1-1/2" bolts (5), 1/2" lockwashers (6), and 1/2"-13 nuts (7). A 5/8" dia. hole will have to be drilled in the outside flange of the frame rail at a later step in the installation.

### 4. PASSENGER'S SIDE PUSH ARM

Install the passenger's side push arm (4) in the same sequence and with the same amount and type of fasteners as the driver's side push arm (3).

### 5. DRILLING & TIGHTENING

- (5a.) Align the front bumper with the vehicle grill and front body work then tighten the original equipment bumper bracket nuts.
- (5b.) Tighten the 1/2" fasteners holding the front cross tube brackets (on the mounting frame (2) and clamp bars (1) to the frame rails. Hold the driver's side and passenger's side push arms (3) & (4) up tight against the bottom flange of the frame rails and tighten the 5/8" fasteners in the upper frame section of the push arms. Tighten the 1/2" fasteners holding the front ends of the push arms (3) & (4) to the end plates of the rear cross tube on the mounting frame (2).
- (5c.) Using the front hole in each rear frame plate on the push arms (3) & (4) as a guide drill a 5/8" hole through each frame rail. From inside each frame rail, insert a 5/8"-11 x 1-1/2" strap bolt (9) out through the 5/8" drilled hole and the rear frame plate of the push arms. Fasten and tighten using 5/8" lock washers (12), and 5/8"-11 nuts (14).
- (5d.) Adjust the 5/8"-11 x 2-1/2" carriage bolts (11) with the front 5/8" jam nuts (13) so that the heads of the carriage bolts are tight against the back of the rear cross tube of the mounting frame (2). Lock the 5/8"-11 x 2-1/2" carriage bolts (11) in place using the rear 5/8"-11 jam nuts (13).

### 6. FINAL ADJUSTMENT AND INSPECTION

Inspect the mounting attachment bolts to be certain that they are all in place and that they are all tight.

### 7. OPTIONAL PLUG MOUNT BRACKET INSTALL



**NOTE** Install the Plug Mount Bracket if the harness will be mounted on the frame kit, otherwise, the harness may be routed through the grill, bumper, etc.

Using (2) 10-32 x 3/4" hex bolts and nylon locknuts, fasten the Plug Mount Bracket to the Plug Mount Bracket Mounting Tab located on the driver's side of the frame kit receiver. The included 8-32 hardware is used for mounting the hi-amp battery leads to the Plug Mount Bracket if used.

