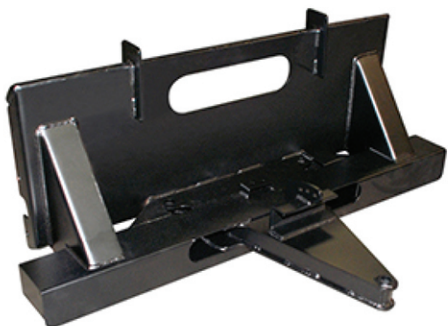




LOADER BLADES WITH 3 MOUNT OPTIONS

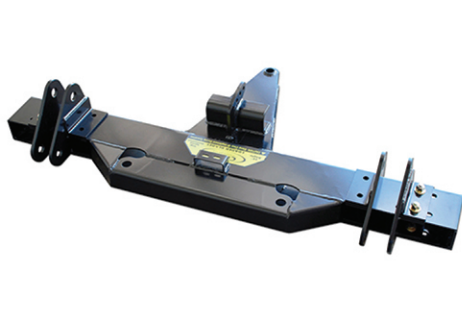
MOUNTING OPTION 1



SKID STEER MOUNT

For Skid Steer and Skid Steer Style Compact Tractors Under 47Hp. Features Easy On & Off. No Welding Required.

MOUNTING OPTION 2



UNIVERSAL PIN MOUNT

For Bolt on Loader Arm Blades: Inside Diameter 30" to 50" Outside Diameter. No Weld Design. For Any Compact Tractor Up To 47Hp.

MOUNTING OPTION 3



JOHN DEERE QUICK-ATTACH MOUNT

Custom Mount was Engineered exclusively for 200, 300 and 400 Series John Deere Loaders Only. Pre-Welded and Ready to Work.

A LOADER BLADE BUILT TO LAST

Six Different Blade Lengths

- 5' Moldboard Kit
- 6' Moldboard Kit
- 6.5' Moldboard Kit
- 7' Moldboard Kit
- 7.5' Moldboard Kit
- 8' Moldboard Kit



Adjustable Heavy Duty Trip Springs

Powder Coat Finish

Tough and Durable 11 Gauge Moldboard

Power Angle Features Mechanical Stops

Blade Markers Included

Reversible Cutting Edge

Full Moldboard Trip Design

Rotating Type Skid Shoes Included

Extended 4' Push Frame

10 Inch Power Angle Cylinders

Loader Blade Shown with Skidsteer Mount
* Complete Hydraulic Package with all Mount Kits Excludes Loader Valve Specific Quick Couplers

FOR MOST MAJOR BRAND TRACTORS AND SKID STEERS UP TO 47 HORSEPOWER



LOADER BLADES WITH 3 MOUNT OPTIONS



THE CURTIS LOADER BLADE ADVANTAGE

CURTIS FEATURES	YOUR BENEFIT
Extended 4 Foot Push Frame	Increased Stability for Blade
Heavy Duty Trip-Springs	Fully Adjustable Resistance
Multiple Mounting Options	One That Works for Your Loader
Reversible Cutting Edge	Saves Money
Options Available For Snow Plowing	Wings and Deflectors Available
Six Moldboard Lengths	Choices For Your Loader
Two Year Limited Warranty	Curtis Quality
Skid Shoes & Blade Markers Included	Curtis Value

A LOADER BLADE BUILT TO WORK



RUBBER CUTTING EDGES AVAILABLE

Optional
1" x 6" Rubber
Sold By The Foot

Use for Cobblestone and Brick or any
Surface that Requires Lighter Contact

AUTHORIZED DEALER

*KUBOTA IS A REGISTERED TRADEMARK OF KUBOTA CORPORATION, INC. CURTIS INDUSTRIES, LLC AND ITS PRODUCTS ARE NOT ENDORSED OR AFFILIATED WITH KUBOTA CORPORATION, INC.
*JOHN DEERE IS A REGISTERED TRADEMARK OF JOHN DEERE INDUSTRIES, INC. CURTIS INDUSTRIES, LLC AND ITS PRODUCTS ARE NOT ENDORSED OR AFFILIATED WITH JOHN DEERE INDUSTRIES, INC.