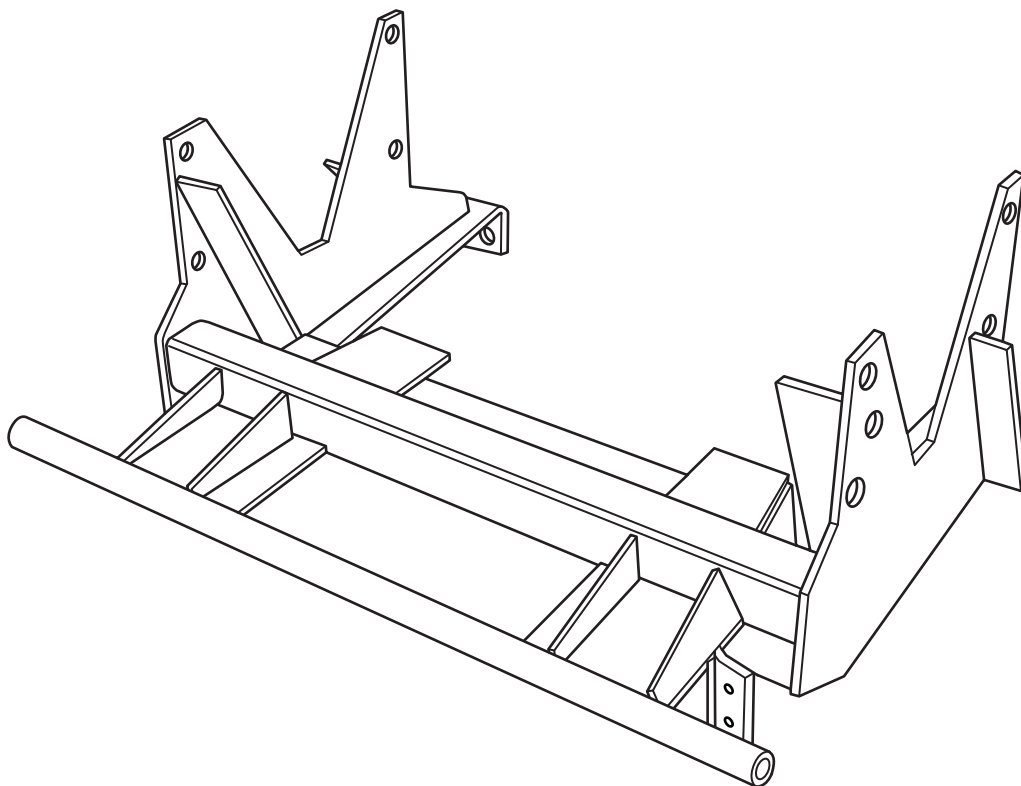




HOME-PRO[®] 3000

**1998 – Ford Ranger
(With Max. GVWR & Max. FGAWR ONLY)**

Vehicle Mounting Kit: 1FK21



Revised 14 February 2011

Curtis Industries Inc. LLC, 111 Higgins St., Worcester, MA 01606 TEL: (800) 343-7676 FAX: (508) 854-3377 For Parts and information visit us at www.Curtisindustries.net
Curtis Industries Inc. LLC, reserves the right to change product design or specifications without notice or liability.
Curtis Snow Plows are protected by the following U.S. Patent Numbers: 6,145,222 and 6,209,231 Licensed under U.S. Patent Number 5,568,694 & Canadian Patent Number 2,137,853.
Other patents pending.

1FK21 Vehicle Mount Kit Parts List

Item #	Description	Qty.
1	Mounting Frame	1
2	40" Piece of 9PR01 Trim-Loc	1
3	Long Bolting Bar	2
4	Short Bolting Bar	2
Hardware Bag Components Included In This Kit		
5	1/2"-13 x 4" Bolt, Gr.5, Plated	8
6	1/2" Lock Washer, Plated	8
7	1/2"-13 Hex Nut, Plated	8
8	5/8"-11 x 4" Bolt, Plated, Gr. 5	2
9	5/8"-11 x 2-1/2" Carriage Bolt, Plated, Gr. 5	2
10	5/8" Lock Washer, Plated	4
11	5/8"- 11 Hex Nut, Plated	2
12	5/8"- 11 Hex Jam Nut, Plated	4
Hardware Components Included In Plow Kit		
1a	Plug Mount Bracket	1
-	10-32 x 3/4" Hex Head Screw, Plated	2
-	10-32 Nylock Lock Nut, Plated	2
-	8-32 x 1" Hex Head Screw, Plated	1
-	8-32 Nylock Lock Nut, Plated	1
-	#8 Nylon Flat Washer, 3/4" O.D.	1
-	#8 Flat Washer, SAE, Plated	1

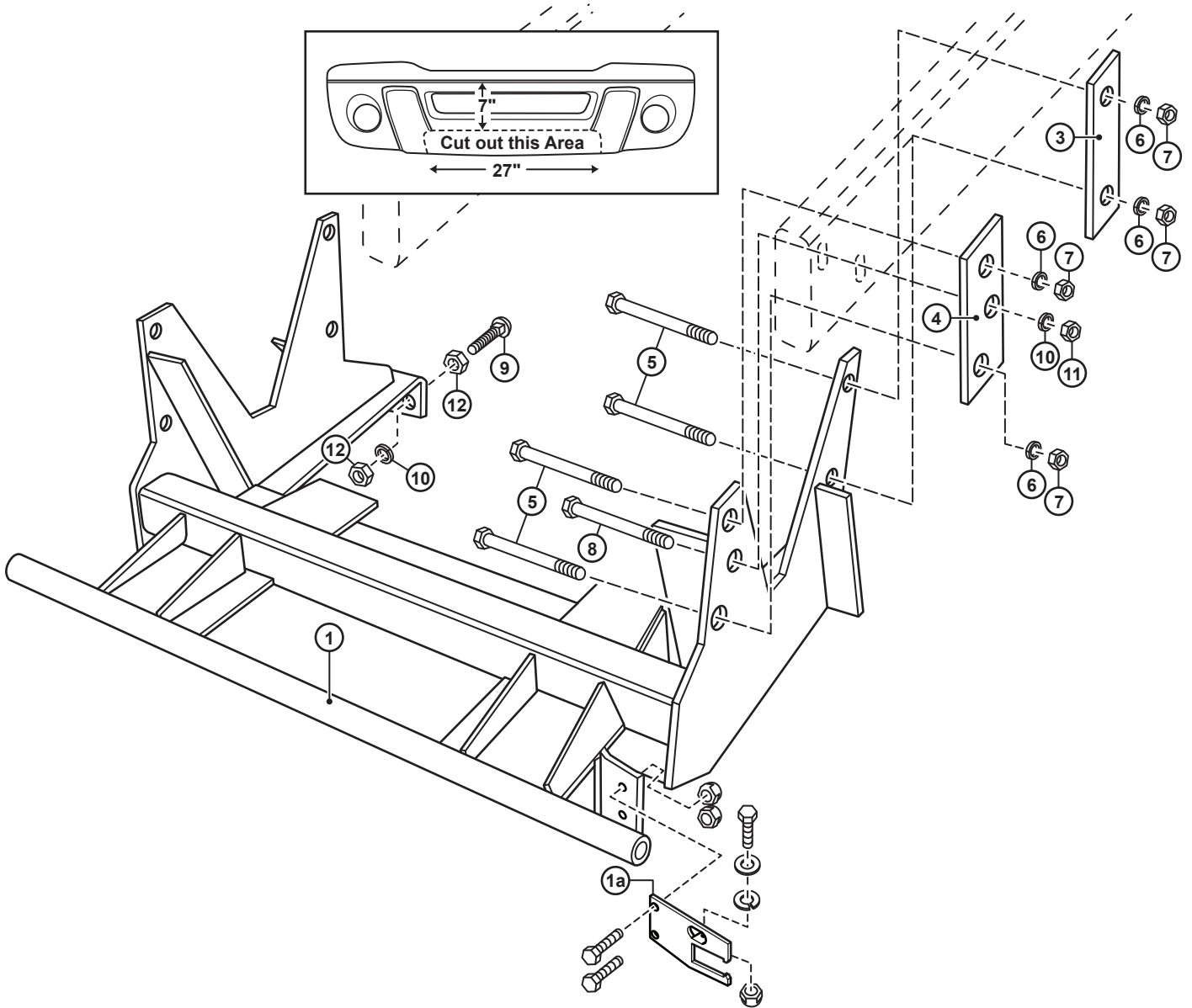


WARNING

It is highly recommended that front "helper springs", "airshocks", or other similar devices be installed onto this vehicle to prevent the front suspension from "bottoming out" while carrying a snow plow.

Vehicle must be properly "ballasted" by placing ballast weight behind the centerline of Rear Axle so that no more than 62% of the total weight of the Vehicle, Snow Plow, Driver, Ballast weight, (and any cargo) is placed on the Front Axle while at the same time not exceeding the Gross Vehicle Weight Rating and Front or Rear Gross Axle Weight Ratings.

1FK21 Mounting



Curtis Industries, LLC. reserves the right to change product design or specifications without notice or liability. Curtis Snow Plows and Truck equipment should only be used on vehicles equipped with the manufacturer's Snow Plow preparation package. Snow Plowing without the original snow plow preparation package may damage your vehicle and the added weight of the equipment may impair the operation and control of the vehicle.

1FK21: 1998 – Ford Ranger

Mounting Kit Installation Instructions

1. VEHICLE PREPARATION

- (1a.) Measure 7" down from the seam between the upper steel piece and the lower plastic piece of the front bumper assembly. If the lower plastic piece is lower than the 7" measurement, trim out a section of the plastic piece 27" wide up to the 7" measurement. Fit the piece of trim-loc (supplied with kit) to the edges of the trimmed out section (trim as necessary). Remove and discard the plastic splash cover and fasteners (under the radiator), plastic filler flaps and fasteners (inside of each frame rail and front cross member) if the vehicle is so equipped.
- (1b.) Screw a 5/8"-11 hex jamb nut (12) all the way onto each of the 5/8"-11 x 2-1/2" carriage bolts (9). Place each carriage bolt / jamb nut assembly into the push ears at the rear of the mounting frame (1) with the heads of the carriage bolts toward the rear of the vehicle. Fasten loosely using a 5/8"-11 jamb nut (12), and 5/8" lock washer (10) on each carriage bolt / jamb nut assembly.



NOTE

All fasteners should remain loose or "finger tight" until all components have been attached to vehicle or installation instructions specify tightening.

2. MOUNTING FRAME

- (2a.) Lift the mounting frame (1) up under the front of the vehicle with the vertical plates between the vertical inner surfaces of the frame rails and with the large holes in the front vertical brackets lined up with the front slotted holes through each frame rail.



NOTE

On some vehicles with automatic transmissions, it may be necessary to slightly reroute the transmission cooling lines to prevent interference with the mounting frame (1).

- (2b.) Loosely fasten the mounting frame (1) through the frame rails (at the slotted holes) using 5/8"-11 x 4" bolts (8). On the outside of each frame rail, place the large hole of each short bolting bar (4) on over the threaded ends of the 5/8" bolts (8). Fasten loosely using 5/8" lock washers (10) and 5/8"-11 nuts (11).
- (2c.) Insert 1/2"-13 x 4" bolts (5) through the holes in each front vertical plate of the mounting frame (1) and through the front two holes in the short bolting bar (4) on the outside of each frame rail. Fasten loosely using 1/2" lock washers and 1/2"-13 nuts (7). Insert 1/2"-13 x 4" bolts (5) through the holes in each rear vertical plate of the mounting frame (1) and through the two holes in the long bolting bar (3) placed on the outside of each frame rail. Fasten loosely using 1/2" lock washers and 1/2"-13 nuts (7).
- (2d.) Tighten all 5/8" and 1/2" fasteners holding the mounting frame (1) to the vehicle frame rails. Adjust the 5/8"-11 x 2-1/2" carriage bolts (9) using the rear 5/8"-11 jamb nuts (12) so that the heads of the carriage bolts are tight against the front of the vehicle front suspension cross member. Lock the 5/8"-11 x 2-1/2" carriage bolts (9) in place by tightening the front 5/8"-11 jamb nuts (12).

3. PASSENGER'S SIDE PUSH ARM

Install the Passenger's Side Push Arm (3) in the same sequence and with the same amount and type of fasteners as the Driver's Side Push Arm (2).

4. FINAL ADJUSTMENT AND INSPECTION

Inspect the vehicle and mounting attachment bolts to be certain that they are all in place and that they are all tight.

