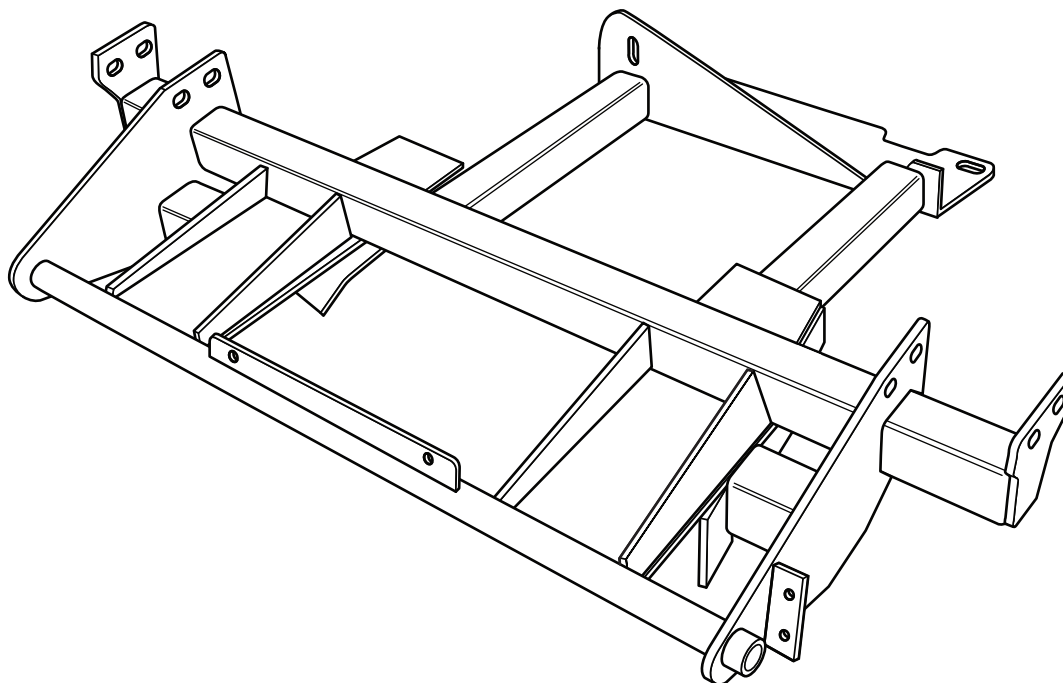




# **SNO-PRO<sup>®</sup> 3000**

**2014 - GM (New Style) 1500 Truck & Tahoe / Yukon 1500  
(4x4 With VYU ONLY)**

## **Vehicle Mounting Kit: 1FK50**



Revised 17 September 2015

Curtis Industries LLC, 111 Higgins St., Worcester, MA 01606 TEL: (508) 853-2200 FAX: (508) 854-3377 For Parts and information visit us at [www.CurtisCab.com](http://www.CurtisCab.com)

Curtis Industries LLC, reserves the right to change product design or specifications without notice or liability.

Curtis Snow Plows are protected by the following U.S. Patent Numbers: 6,145,222 and 6,209,231 Licensed under U.S. Patent Number 5,568,694 & Canadian Patent Number 2,137,853.

Other patents pending.

## 1FK50 Vehicle Mount Kit Parts List

Item #	Description	Qty.
1	Mounting Frame	1
2	Bolting Bar	1
3	5/8"-11 x 1-1/2" Strap Bolt, 16" Long	1
<b>Hardware Bag Components Included In This Kit</b>		
4	1/4"-20 x 3/4" Hex Bolt, Gr. 5, Plated	2
5	1/4" Flat Washer, Plated	2
6	1/4" Lock Washer, Plated	2
7	1/4"-20 Hex Nut, Plated	2
8	5/8" x 7" Hex Bolt, Gr. 5, Plated	1
9	5/8" Lock Washer, High Strength, Plated	2
10	5/8" Flat Washer, Plated	2
11	5/8" Hex Nut, Plated	2
12	12mm x 1.75mm x 130mm Hex Bolt, Gr. 10.9, Plated	4
13	12mm Flat Washer, Plated	2
14	12mm Lock Washer, High Strength, Plated	2
15	12mm x 1.75mm Hex Nut, Plated	2
<b>Hardware Components Included In Plow Kit</b>		
1a	Dual Plug Harness Bracket	1
-	10-32 x 3/4" Hex Head Screw, Plated	2
-	10-32 Nylock Lock Nut, Plated	2
-	8-32 x 1" Hex Head Screw, Plated	1
-	8-32 Nylock Lock Nut, Plated	1
-	#8 Nylon Flat Washer, 3/4" O.D.	1
-	#8 Flat Washer, SAE, Plated	1

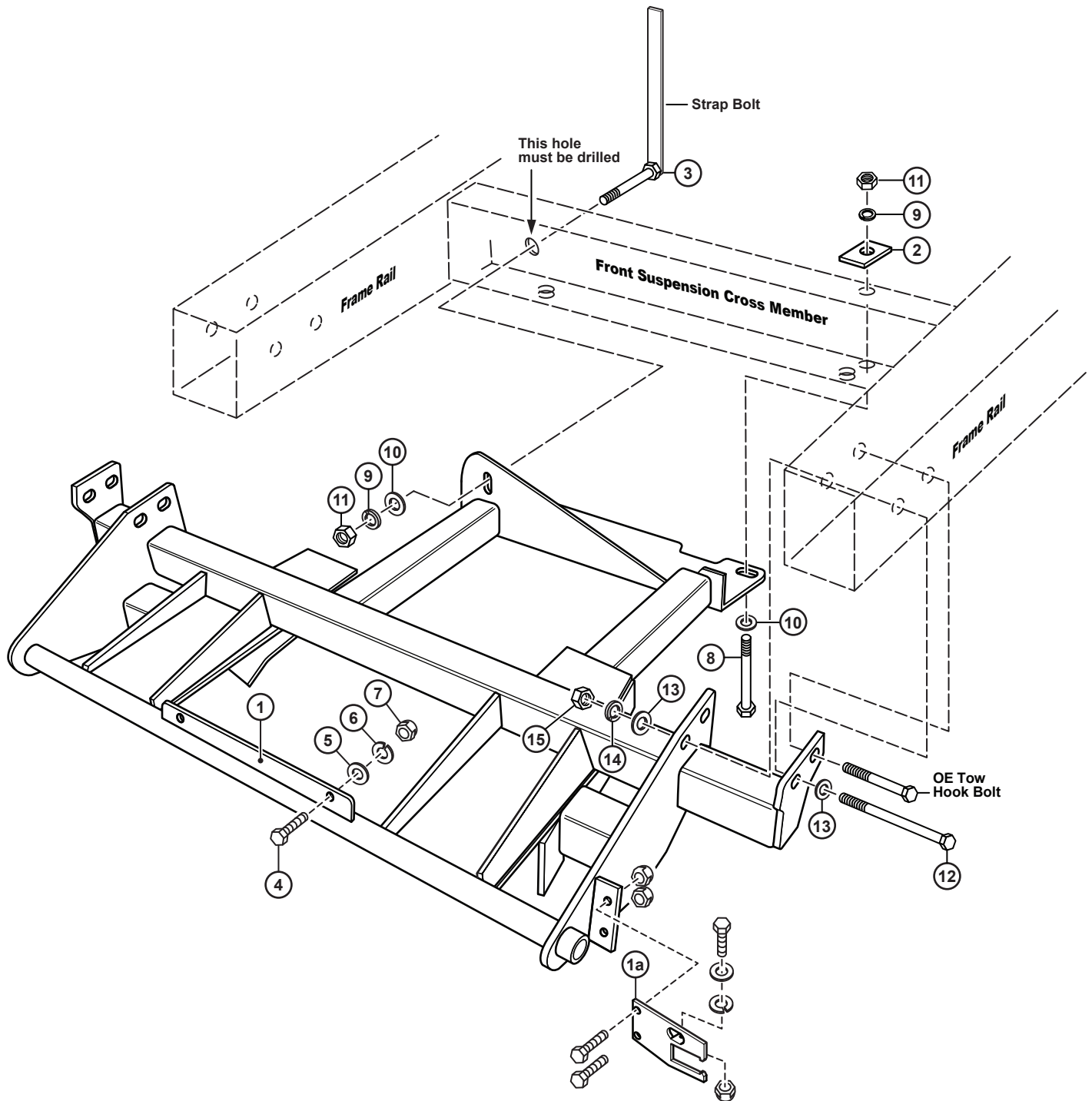


### WARNING

It is highly recommended that front "helper springs", "airshocks", or other similar devices be installed onto this vehicle to prevent the front suspension from "bottoming out" while carrying a snow plow.

Vehicle must be properly "ballasted" by placing ballast weight behind the centerline of Rear Axle so that no more than 62% of the total weight of the Vehicle, Snow Plow, Driver, Ballast weight, (and any cargo) is placed on the Front Axle while at the same time not exceeding the Gross Vehicle Weight Rating and Front or Rear Gross Axle Weight Ratings.

## 1FK50 Mounting



Curtis Industries, LLC. reserves the right to change product design or specifications without notice or liability. Curtis Snow Plows and Truck equipment should only be used on vehicles equipped with the manufacturer's Snow Plow preparation package. Snow Plowing without the original snow plow preparation package may damage your vehicle and the added weight of the equipment may impair the operation and control of the vehicle.

# 1FK50: 2014 - GM1500 Truck & Tahoe / Yukon 1500 4x4

## Mounting Kit Installation Instructions

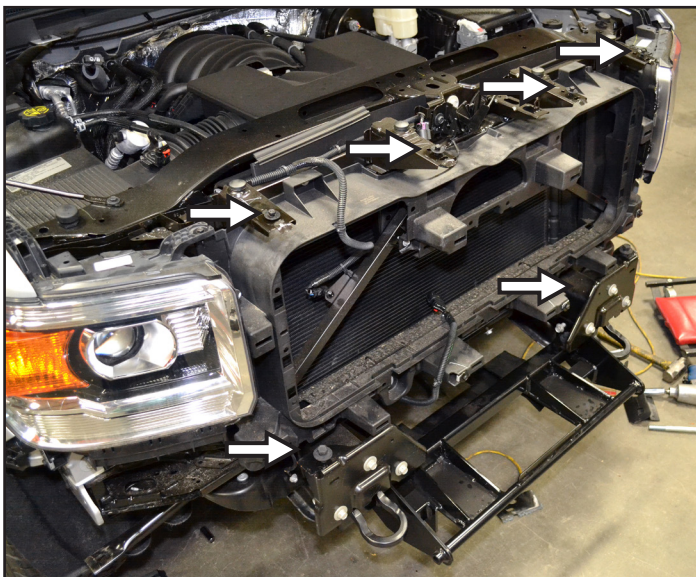
### 1. VEHICLE PREPARATION

(1a.) Remove plastic top cover from the front of the engine compartment. Remove the four cap screws and release the locking tabs located along the top of the grille. Remove the four screws attaching the grille to the radiator support. Remove the two bumper cover screws located on the inside of each front wheel well. If the vehicle is equipped with fender trim, it will need to be displaced in order to access the screws. Pull the bumper cover assembly forward to disengage grill tabs and remove the grille. Remove the four main bumper fasteners and the single fastener securing the bumper ends to the outer bumper supports. Remove the bumper. Refer to Figure 1 and 2.

Figure 1. Fender Removal & Bumper Trim



Figure 2. Grille and Bumper Bolt Locations



Save all pieces and fasteners for reinstallation. Trim an approximately 28-1/2" long x 10-1/2" deep section out of the center of the lower plastic vehicle front fascia / grill / bumper cover. (This section to be removed should line up with the space between the frame rails and up to the bottom surface of the steel bumper). Refer to Figure 3.

(1b.) Remove and save the metric nuts and bolts holding the tow hooks to the frame rails. (Leave the tow hooks in place inside the vehicle boxed frame rails). Remove and save the metric bolts holding the plastic splash shield to the front suspension cross member and front round tube cross member. Remove the plastic splash shield, (it will not be reinstalled with the mounting frame (1) in place).



#### NOTE

All fasteners should remain loose or "finger tight" until all components have been attached to Vehicle or installation instructions specify tightening.

#### IMPORTANT

If the plow mounting frame is ever removed from the vehicle, the plastic splash shield should be reinstalled back onto the vehicle using the original fasteners.

### 2. MOUNTING FRAME

(2a.) Lift the mounting weldment (1) up onto the vehicle frame with the inner front vertical ears between the frame rails, the outer vertical ears outside the frame rails and with the rear cross angle up against the bottom surface and the front surface of the front suspension cross member. Refer to Figure 4.

Line up the front holes in the vertical ears with the front horizontal tow hook bolt holes and attach using 12mm x 1.75mm x 130mm bolts (12) with 12mm flat washer (13) through the outer ears, frame rails, tow hooks and inner ears on each side. Install 12mm flat washers (13), 12mm lock washers (14), and 12mm x 1.75 nuts (15) onto the 12mm x 1.75 x 130mm bolts (12).

(2b.) Reinstall the short original equipment metric tow hook bolts through the vertical ears, frame rail flange and into the threaded holes in the tow hooks. Reinstall two of the original equipment metric splash shield bolts through the front slotted holes in the rear angle of the mounting frame (1) into the threaded holes in the front suspension cross member. Insert a 5/8" x 7" bolt (8) and 5/8" flat washer (10) up through the rear slotted hole in the rear angle of the mounting frame (1) and through the holes in the lower and upper front suspension cross member. Place the bolting bar (2) over the threaded end of the bolt (8). Fasten using 5/8" lock washer (9) and a 5/8" Nut (11).

(2c.) On the back angle of the mounting frame (1) locate the slotted mounting hole. Using the slotted mounting hole as a guide, drill through the mounting hole and through the front suspension cross member. Insert the 5/8-11 x 1-1/2" Strap Bolt (3) through the front suspension cross-member and mounting frame (1) and secure the bolt with a 5/8" flat washer (10), a 5/8" lock washer and a 5/8-11 Hex Nut (11). Refer to Figure 4.

### 3. TIGHTENING

(3a.) Make sure the mounting frame is held tight against the bottom surface of the frame rails and front suspension cross member and that the bolting bar (2) is across the width of the front suspension cross member.

(3b.) Tighten all original equipment and additional fasteners at this time being careful to not over tighten the 5/8" fasteners and crush the front suspension cross member or strip any threaded fasteners.



## 1FK50: 2014 - GM1500 Truck & Tahoe / Yukon 1500 4x4

### 4. ORIGINAL EQUIPMENT PARTS

- (4a.) Reinstall the vehicle's plastic front fascia / grill / bumper cover using the original equipment fasteners. The plastic splash shield will not be reinstalled with the mounting frame in place.
- (4b.) The front license plate can be installed to the bracket on the front round bar of the mounting frame using 1/4"-20 x 3/4" bolts (4), 1/4" flat washers (5), 1/4" lock washers (6) and 1/4"-20 nuts (7).

### 5. FINAL ADJUSTMENT AND INSPECTION

Inspect the mounting attachment bolts to be certain that they are all in place and that they are all tight.

### 6. OPTIONAL PLUG MOUNT BRACKET INSTALL

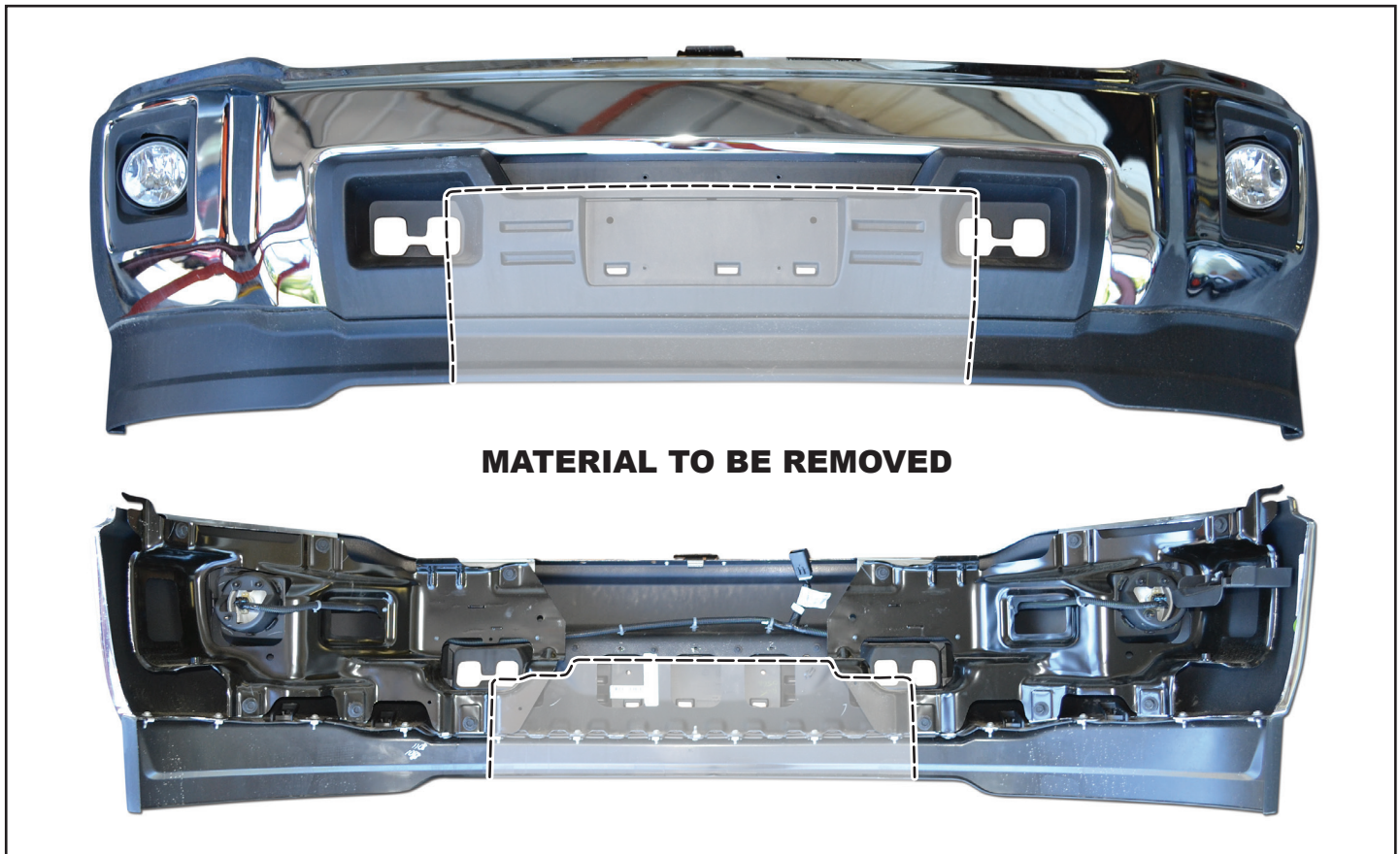


#### NOTE

Install the Plug Mount Bracket if the harness will be mounted on the frame kit, otherwise, the harness may be routed through the grill, bumper, etc.

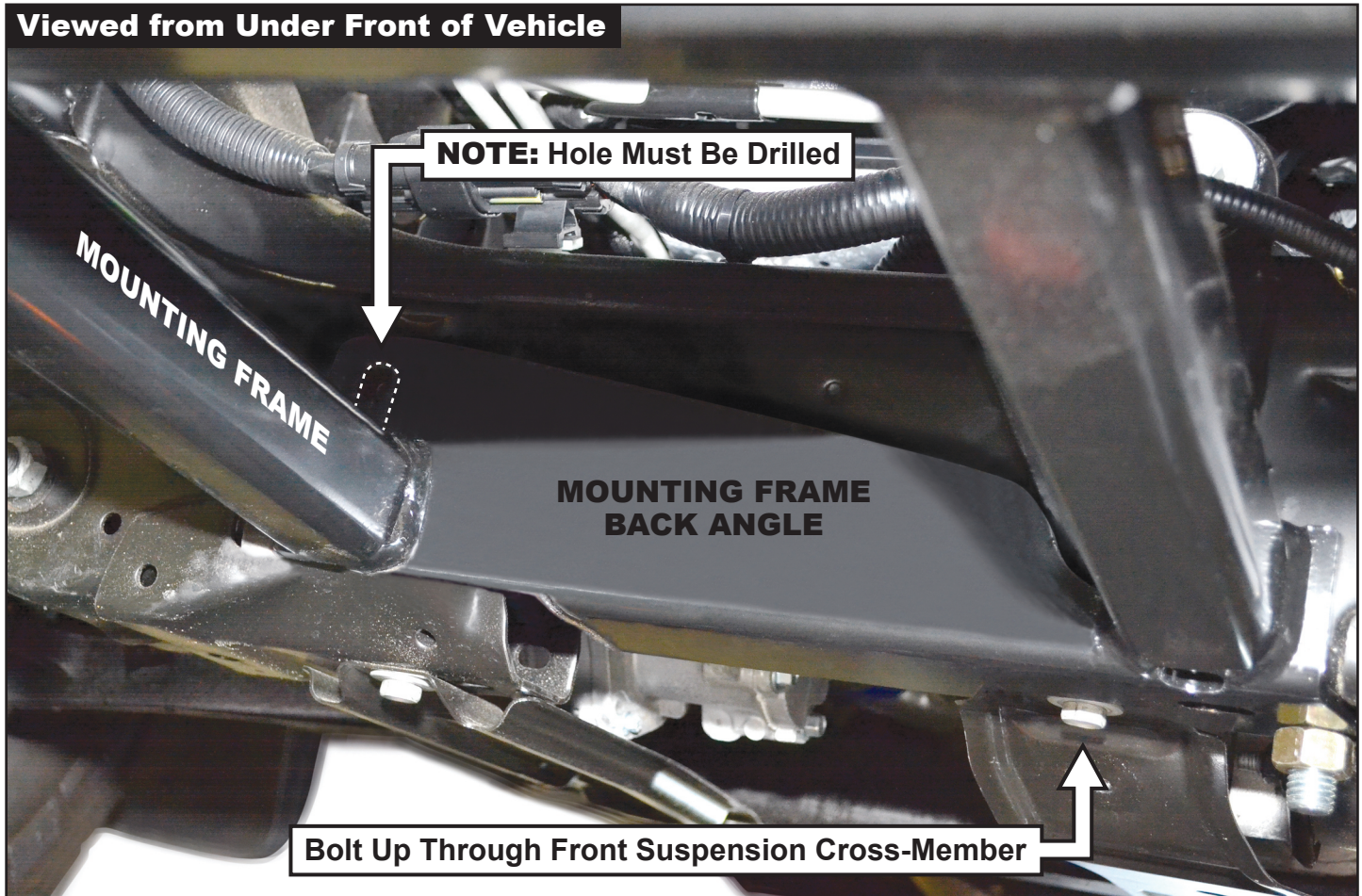
Using two 10-32 x 3/4" hex bolts and nylon locknuts, fasten the Plug Mount Bracket to the Plug Mount Bracket Mounting Tab located on the drivers side of the frame kit receiver. The included 8-32 hardware is used for mounting the hi-amp battery leads to the Plug Mount Bracket, if used.

Figure 3. Fender & Bumper Trim



## 1FK50: 2014 - GM1500 Truck & Tahoe / Yukon 1500 4x4

Figure 4. Mounting Frame Install



### NOTES:

---